



Annual Security Report

2022

HACC, Central Pennsylvania's Community College

Gettysburg Campus

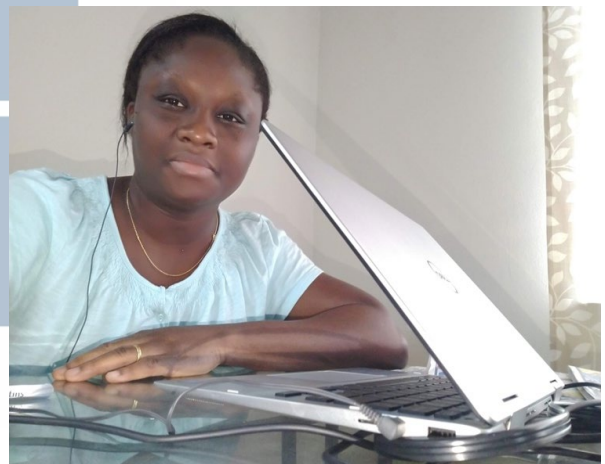
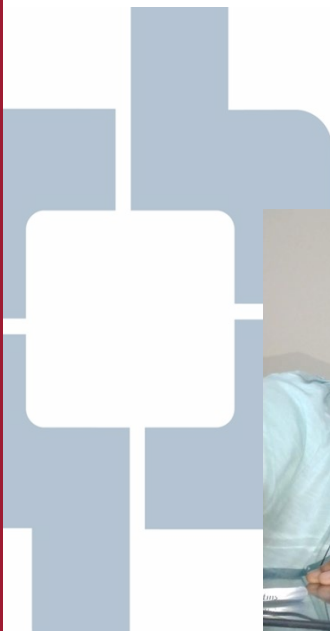
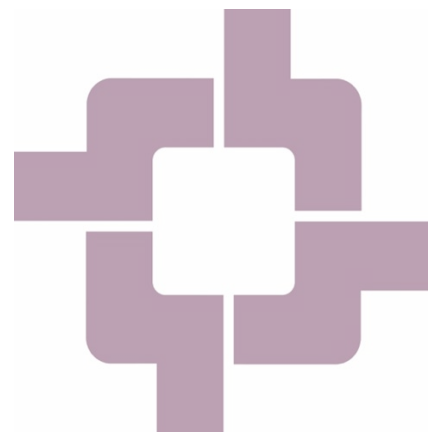
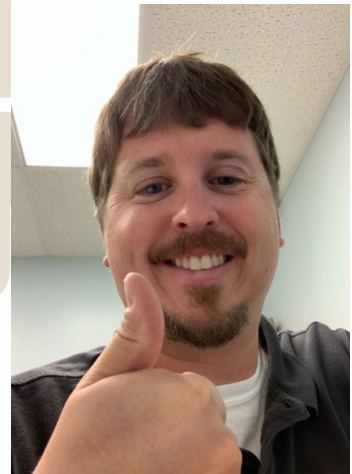
Harrisburg Campus

Lancaster Campus

Lebanon Campus

York Campus

YOURS.



PLEASE NOTE:

The following revisions have been made to the previously published version:

- *Page 44 – Updated the description of the Lebanon Campus geographical boundaries.
- *Page 45 – Updated the Lebanon Campus Reportable Crimes chart.
- *Page 57 – Updated the Lebanon Campus Crime statistics for the UCR reporting.
- *Page 58 – Updated the “Total of ALL Offenses”.
- *Page 66 – Updated the Map Key Chart.
- *Page 69 – Updated the Lebanon Campus Clery Geography map.

HACC, Central Pennsylvania's Community College

Annual Security Report

2022

Clery Act

The Jeanne Clery Disclosure of Campus Security Policy and Crime Statistics Act (Clery Act) and its amendments is a federal law which requires institutions of higher learning that receive Title IV funding to publish annually a report which outlines policies related to campus security and emergency response that discloses crime prevalence statistics for crimes reported to the institution's Security/Public Safety Department and other campus authorities designated as Campus Security Authorities (CSAs). The reported statistics must cover the most recent three-year period and include those crimes occurring on any campus, any public property immediately adjacent and accessible to a campus and any non-campus buildings or property owned or controlled by the institution. HACC publishes this report with the required information for all of its campus locations in compliance with this act.

Pennsylvania Compliance

This publication is compiled in compliance with the Pennsylvania Uniform Crime Reporting Act. It contains Uniform Crime Report statistics and crime rates as submitted to the Pennsylvania State Police for the most recent three- year period as well as the policy disclosures mandated under these acts.

If you feel HACC has failed to comply with the requirements of these acts, please file a complaint with:

Executive Director of Public Safety
and Security Whitaker Hall 131
One HACC Drive
Harrisburg, PA 17110
Telephone: 717-780-1967; internally, ext. 211967

If, after submitting a complaint with the above, you do not feel your complaint has been resolved, you may contact the Pennsylvania Office of Attorney General, which will investigate the alleged violation. Contact information for the Office of Attorney General is available upon request.

Availability

This report is published annually no later than Oct. 1 of the calendar year and made available free-of-charge to all HACC students, prospective students, employees and prospective employees via printed media and electronic distribution. This report is available via the Web by visiting <https://www.hacc.edu/AboutHACC/PublicSafetyandSecurity/upload/HACC-ASR.pdf>



To obtain a free print copy, visit your Campus Public Safety and Security office or welcome center.

All policy statements reflect current policies and practices at all HACC Campuses unless otherwise noted.

Public Safety and Security Department Overview

The HACC Public Safety and Security Department strives to provide public safety services to the College community with integrity, efficiency and professionalism. Collegewide, the Public Safety and Security Department employs an Executive Director and Director, 30 full-time officers and 6 part-time officers. Each Campus Public Safety and Security Office is supervised by a security supervisor or lead officer.

HACC Public Safety and Security Officers provide a highly visible security presence through continuous uniformed patrol of the campuses. The department controls access to campus facilities through the opening and locking of buildings and the utilization of key control and card access.

Officers respond to and conduct preliminary investigations of criminal and other incidents on HACC's campuses and leased facilities. Public safety and security officers seek assistance from, and report criminal activity to, local and state police agencies or other emergency services as situations dictate.

HACC Public Safety and Security Officers are required to obtain a number of professional certifications and receive annual updates and in-service training covering security, safety and emergency medical response.

All officers are required to maintain the following certifications/licenses:

- Pennsylvania Lethal Weapons Act (Act 235) Certification
- Expandable Baton Basic Certification
- Tactical Handcuffing Certification
- Oleoresin Capsicum Aerosol Training (OCAT) Basic Oleoresin Capsicum (OC) Pepper Spray Certification
- First Aid Certification
- Cardiopulmonary Resuscitation (CPR) Certification
- Adult and Juvenile Automated External Defibrillator (AED) Certifications
- Pennsylvania driver's license

Authority

HACC Public Safety and Security Officers are not sworn as police officers and do not have arrest powers except as granted by law to private citizens for on-sight felony and retail/library theft detainment.

Under College policy, public safety and security officers may issue warnings and fines for violations of on-campus parking regulations. Fines for violations are outlined in HACC Security and Access Policy, Shared Governance Procedure (SGP) 300 and will be assessed against a student or employee's account until paid.

HACC Public Safety and Security Officers are granted authority to ask people for identification and to determine whether individuals have lawful business on any HACC campus or property.

Reporting Crime

All members of the College community are encouraged to report immediately any known or suspected criminal activity on College property to the HACC Public Safety and Security Department. Reports may be made on a voluntary confidential basis by contacting the Campus Public Safety and Security Department in person, by phone or callbox, or by utilizing the “Campus Report a Crime” online service on the Public Safety and Security website at

<https://www.hacc.edu/AboutHACC/PublicSafetyandSecurity/Report-A-Crime.cfm>



for the online reporting form.

Individuals reporting crimes to the HACC Public Safety and Security Department may elect to remain anonymous. You may use the online “Campus Report a Crime” online service on the HACC Public Safety and Security Website for anonymous reporting. You may include as much or as little identifying information on the form as you are comfortable sharing. Please note while reports made to security personnel, Campus Security Authorities, or other responsible employees of the College will be held confidential, disclosure of personally identifiable information may be mandated by law in the furtherance of a Title IX investigation. Individuals reporting should also consider that reports that withhold information might affect the ability of the College or outside authorities to conduct a timely and effective investigation into an alleged crime.

The HACC Public Safety and Security Department will report criminal activity to the local police and the Pennsylvania State Police as necessary and/or immediately upon request of a crime victim. The HACC Public Safety and Security Department maintains a professional working relationship with the state and local police departments in each of HACC’s host municipalities and obtains crime statistics from them for inclusion in HACC’s Annual Security Report.

Criminal actions or policy violations committed by students will also be referred to the Director of Student Conduct who will review the complaint and initiate possible student disciplinary action. Any College disciplinary action will be separate from actions taken by civil authorities. The disciplinary procedure is governed by HACC Student Disciplinary Action Policy, SGP 505, which may be found on the myHACC document search or by contacting any administrative office. Victims of violent crime or non-Clery sex offenses will be provided, upon written request, with the outcome of any College disciplinary proceedings against the alleged offender. If a victim is killed as a result of a violent crime, the victim’s next-of-kin may also be notified upon written request. In cases of sexual assault, dating violence, domestic violence, and stalking notification to both accuser and accused are made without need for request and as simultaneously as possible.

Per federal Clery Act requirements, all criminal activity reported to Campus Security Authorities must be reported to the HACC Public Safety and Security Department for inclusion in the daily crime log, annual security report and for possible dissemination as timely warning notices. No information about the reporting party or any information that may easily identify a victim is included in these disclosures.

HACC recognizes crime victims may elect not to involve police or seek College disciplinary action. Victims electing not to pursue police or disciplinary action are still encouraged to immediately report

crimes. In cases where a victim may be unable to report a crime for any reason, witnesses or others having knowledge of the crime are encouraged to report the crime on behalf of the victim.

The HACC Public Safety and Security Department has obtained written memorandums of understanding (MOUs) with Cumberland Township Police (Gettysburg Campus), Harrisburg City Police, Lebanon City Police, East Lampeter Township Police (Lancaster Campus) and York City Police. These MOUs serve to establish a formal working relationship between the HACC Public Safety and Security Department and the local police agencies and include agreements regarding jurisdiction, the reporting and investigation of crimes, and information sharing.

For public safety and security assistance at any campus, call central dispatch at 717-780-2568

Please note: The HACC Public Safety and Security Department has no jurisdiction over crimes occurring off campus. Any criminal activity not occurring on College-owned or controlled property or immediately adjacent public walkways should be reported to the local or state law enforcement agency responsible for your particular area. If requested, The HACC Public Safety and Security Department will assist with contacting the proper authorities. HACC does not have any officially recognized off-campus student organizations or housing facilities.

Hawk Response by Nowforce

Hawk Response by Nowforce is a free app for smartphones that lets you immediately contact public safety and security personnel on any HACC campus.

Hawk Response has two reporting features, which allow users to immediately bring emergency situations and criminal incidents to your campus Public Safety and Security Department (DPSS) office:

- The first is the SOS function, which serves as a mobile “panic button.” Officers will respond immediately to a user’s on-campus location when this feature is activated. Off-campus activation of this feature will call 911.
- The second is a report function that allows users to report a number of situations, including criminal actions, medical emergencies, safety concerns or suspicious activity. Users have an opportunity to enter information about what is happening and attach photos. Officers will respond to investigate upon receipt of these submissions.

Hawk Response uses geofencing technology and will automatically offer to dial the appropriate campus Public Safety and Security telephone number in addition to sending an electronic notification to campus security officers. Users making reports from an off-campus location will be provided the opportunity to call 911 from the app.

Users should be aware they might incur data or other charges as assessed by their cellular carrier when using this application and using the reporting function to report a safety, criminal or emergency situation will automatically disclose their location and identity to the HACC Public Safety and Security Dispatch Center and responding campus officers.

Please note the Hawk Response by Nowforce application does not distribute HACC timely warning or immediate emergency notifications.

Hawk Response can be easily downloaded on an Apple or Android smartphone. Directions on how to register, install and use the free app can be found on myHACC or at hacc.edu/HawkResponse.



Scan this QR Code
for more
information on
Hawk Response.

Non-Campus Law Enforcement

The following agencies may be contacted for assistance in their respective jurisdictions:

<u>Campus</u>	<u>Local Police</u>	<u>State Police</u>
Gettysburg Campus	Cumberland Township Police 717-334-3996	Pennsylvania State Police Gettysburg 717-334-8111
Harrisburg Campus & Midtown Center	Harrisburg Bureau of Police 717-558-6900	Pennsylvania State Police HQ 717-671-7500
Lancaster Campus	East Lampeter Township Police 717-291-4676	Pennsylvania State Police Lancaster 717-299-7650
Lebanon Campus	Lebanon City Police Department 717-272-6611	Pennsylvania State Police Jonestown 717-865-2194
York Campus	York City Police Department 717-846-1234	Pennsylvania State Police York 717-428-1011
All Campuses Emergency Response	911	911

Campus Crime Log

The HACC Public Safety and Security Department maintains a log of all criminal activity by nature of offense, date, time, location and disposition of the complaint. The information in the log is available for public review at each Campus Public Safety and Security office during campus operating hours, unless such disclosure would be prohibited by law, would jeopardize the confidentiality of a victim, would jeopardize an ongoing criminal investigation, would cause a suspect to flee or evade detection or would result in the destruction of evidence. NOTE: Logs older than 60 days may be archived and will be made available within two business days of request per federal requirements.

Campus Security Authorities

A Campus Security Authority (CSA) is an individual associated with and designated by an institution to fill any of the following four roles as defined by the Clery Act:

- A campus police department or a campus security department of an institution.
- Any individual who has responsibility for campus security but does not constitute a campus police department or a campus security department. This category includes student workers employed by the Public Safety and Security Department and contracted security officers for events.
- Any individual or organization specified in an institution's statement of campus security policy as an individual or organization to which students and employees should report criminal offenses.
- An official of an institution who has significant responsibility for student and campus activities, including, but not limited to, student housing, student discipline and campus judicial proceedings. An official is defined as any person who has the authority and the duty to act or respond to particular issues on behalf of the institution. This category includes student organization/club advisors and coaches/assistant coaches among others.

It is required by law those designated as CSAs report to the HACC Public Safety and Security Department actual or alleged crimes they become aware of by report from a victim, witness and offender or by other means. They need only have a reasonable, "good faith" belief a crime has occurred. There is no requirement for an investigation be conducted by police or other authority nor a finding of guilt or innocence be made by a court or student judicial authority when a report is made.

Reports made by CSAs will be investigated by the HACC Public Safety and Security Department or referred to outside police agencies as appropriate. CSA reports may be used, as other crime reports, to produce campus crime log entries, and Timely Warning notices /Immediate Notifications depending upon the nature of the report. Statistics derived from CSA reports are included in the annual Clery Act statistics published in the Annual Security Report and reported to the Department of Education.

While victim information may be reported to the HACC Public Safety and Security Department by CSAs, victims can rest assured their identity will not be included in any public disclosure.

Professional Counselors

HACC's professional counseling service contractor, Mazzitti & Sullivan EAP Services, when acting in their professional capacity, are not considered Campus Security Authorities. As such, they are not required to report crimes they become aware of in the course of their professional responsibilities. Professional counselors are encouraged, but not required to provide their clients with guidance on how to report crimes to Public Safety and Security, other Campus Security Authorities, or to police.

A professional counselor is someone who provides, within the scope of their license or certification, psychological counseling services to the College community.

Behavioral Intervention Teams

Occasionally, members of the campus community may be confronted with situations in which a student is displaying questionable behavior. The **Behavioral Intervention Team (BIT)** model is designed to be of assistance in these circumstances.

Behaviors of concern might be observed in a number of settings: in the classroom, at a service location or office, at an on-campus job or during participation at an extracurricular activity. By reporting behaviors that are concerning, the BIT will be able to reach out to students to intervene, provide support and connect students with resources that can assist them.

The Behavioral Intervention Team meets regularly to serve five major functions for the campus:

- Act in a proactive manner to assist students
- Maintain confidentiality and handle all matters discreetly
- Provide consultation and support to faculty and staff
- Connect students with needed resources
- Recommend interventions or sanctions

The BIT process does not replace faculty classroom management, disciplinary processes and/or Public Safety and Security responses to incidents.

The BIT model works within all current College policies and serves as a model to formalize current informal processes at the College.

Assistance and Consultation for Faculty and Staff

If a faculty or staff member needs more information or assistance, they should contact a member of the Behavioral Intervention Team for consultation and support. The team member may recommend specific strategies for the faculty or staff member to address the concern or may recommend submission of a Behavioral Reporting Form for further assessment and follow-up by the BIT.

What to Report

In general, any behavior that disrupts the mission or learning environment of the College or causes concern for a student's well-being should be reported. These behaviors include:

- Suspected violations of College policies
- Incidents of academic dishonesty resulting in the lowering of a course grade, failure in a course or dismissal from a course
- Concerns about a student's well-being

The BIT will act quickly to respond to reports; however, they may not be able to provide an immediate response to a concern. BIT Reports are not for reporting crimes. ***Call HACC Public Safety and Security or 911 if you feel threatened or if an immediate response is needed.***

Potential Outcomes of Reports

Upon reviewing the submitted Behavioral Report Form, the BIT may:

- Recommend no action, pending further observation
- Assist faculty or staff in developing a plan of action
- Refer student to existing on-campus support resources
- Refer student to appropriate community resources
- Make recommendations consistent with College policies and procedures

BIT Contacts

<u>Position</u>	<u>Email</u>	<u>Phone</u>
Director of Student Conduct (Chair)	mrDavis@hacc.edu	717-221-1398
Director of Security	cjfox2@hacc.edu	717-780-1741
Dir. of Student Access Services	vlvanhis@hacc.edu	717-358-2972
Dir. of Enrollment Services Operations	mbraswe@hacc.edu	717-780-2376
Director of Keys Program	maarslan@hacc.edu	717-358-2891
Dir. of Student Success Coaching	rajayman@hacc.edu	717-780-2655
Coordinator of HACC CARE Center	CARE@hacc.edu	n/a

Crime Prevention for the Campus Community

Crime prevention presentations are conducted college-wide several times per academic year at each campus during new student and new employee orientations.

The HACC Department of Public Safety and Security conducts presentations covering crime prevention, emergency procedures, and general security and safety information at each campus location. These presentations are scheduled throughout the calendar year in the classroom, at a campus events or for student organizations upon request.

The student development staff at each campus periodically schedules presentations and informational sessions by outside crime prevention organizations. These presentations may be stand-alone events or included as part of another campus event. For more information on attending these events, contact your campus student development office.

Campus Crime Prevention Tips

Crime can be broken down into three elements: ability, opportunity and intent. Ability denotes the offender's skill set: whether the offender has the knowledge and skills necessary to perpetrate a given criminal action. Opportunity denotes a chance to commit a crime, whether through the carelessness of others or of the offender's making. Intent denotes the offender's will to commit a crime. It is our job as conscientious citizens to remove the opportunity component of crime. By diminishing opportunity, the likelihood of becoming a victim will be significantly lowered. Below are some tips to diminish opportunity:

- Keep vehicles locked at all times
- Do not leave valuables in plain view in vehicles
- Walk with others whenever possible, especially after dark
- Utilize the Public Safety and Security escort program
- Be aware of your surroundings
- Lock office areas and smart classroom areas when they are not in use
- Do not leave personal belongings unattended at any time
- Maintain control of keys and access cards issued by HACC
- Be careful what is posted on social networking sites – do not publicly post schedules or other information that may allow strangers to learn where you are located.

- Report any safety or security concerns
- Trust your instincts – if something feels wrong, it probably is!

Safety Services

Escorts

Escorts between on-campus parking areas and campus buildings are provided to members of the campus community by uniformed public safety and security officers. To request an escort, call the security phone number for the campus location or activate the nearest call box. Escorts may be provided by vehicle or on foot, as available.

Access to Facilities

Students, faculty, staff and members of the public have access to most academic, recreational and administrative facilities on an open basis during operating hours. However, some facilities such as smart classrooms or labs, are considered secure. These facilities are to be locked unless they are attended by qualified employee or authorized student.

The HACC Public Safety and Security Department is responsible for providing access to these facilities to persons with proper authorization. After hours and holiday access needs should be brought to the attention of the campus Public Safety and Security office, which will arrange for access based on need.

Note: HACC has no student or employee residential facilities.

Facility Safety

The HACC Public Safety and Security Department maintains a close working relationship with the Facilities Department at all campuses. Public Safety and Security Officers and Facilities Department personnel are alert for issues on campus that may potentially present a safety or security hazard. They must report the issues promptly, so the issues can be corrected as quickly as possible. In addition, Public Safety and Security and Facilities personnel work together to identify areas where safety and security can be improved on campus. Areas for improvement are identified via such methods as lighting surveys and physical security audits.

Firearms and Other Weapons

HACC Security and Access Policy, SGP 300 broadly prohibits the carrying and use of firearms or other weapons on any HACC campus or College-owned or controlled property. This policy includes students, visitors and employees. A valid Pennsylvania License to Carry Firearms does not exempt the holder from this policy.

The policy specifically exempts pepper / OC (Oleoresin Capsicum) spray from the definition of a weapon. Students, visitors and employees may possess and carry pepper spray on HACC's campuses for the purposes of lawful self-defense.

HACC Public Safety and Security Officers are armed and certified by the Commonwealth of Pennsylvania (Lethal Weapons Training Act, Act 235) to carry weapons on campus in the course of their duties. The policy also provides exemptions to allow firearms and other weapons to be brought onto the Harrisburg Campus for the specific purpose of Act 120, Act 44 and Act 235 training or other authorized training conducted at the Sen. John J. Shumaker Public Safety Center (PSC) and the Sen. Jeffrey E. Piccola Law Enforcement Complex. Individuals seeking authorization to bring an item that may be considered a weapon onto any campus for use as a visual aid during a classroom presentation must first obtain permission from the HACC Public Safety and Security Department of the local campus. The full text of HACC Security and Access Policy, SGP 300, is available on myHACC or by contacting any HACC administrative office.

Mass Notification



The e2Campus alert service sends text alerts with urgent messages about emergencies, weather closings or other situations that may affect a HACC campus. In addition to cell phone text messages, users can choose to receive alerts via email or pager. They may also elect to receive alerts for as many campuses as they want. Parents and family of students are welcome to sign up. There is no cost to subscribe to e2Campus alerts. Data and messaging fees may be charged by the recipient's cell phone provider. To sign up for HACC's e2Campus alerts, visit

<https://www.hacc.edu/AboutHACC/PublicSafetyandSecurity/E2Campus-Sign-up.cfm> or scan the HACC e2Campus QR code with a smartphone.

Timely Warning Notices

In the event the HACC Public Safety and Security Department receives a credible report of a Clery Act crime that may present a serious or ongoing threat to members of the College community on any HACC campus, HACC-owned or controlled property, or any portion thereof, or on public property within immediate vicinity to a HACC campus, an alert will be issued to the College community. Possible methods of notification are employee and student HAWKmail email systems, campus electronic signage, the posting of bulletins, the main HACC and Public Safety and Security Department websites at hacc.edu, MyHACC announcements, college and campus official social media accounts (Facebook, Twitter) and campus student media on line publications. Methods of notification are selected by the Office of College Advancement in consultation with the Executive Director of Public Safety and Security or designee to best fit the nature of any given threat. Local and state police agencies will also be advised of any potential risk.

By law and HACC Public Safety and Security Department policy, no information that might identify a crime victim may be included in Timely Warning notices.

Crimes exclusively reported to a pastoral or professional counselor are exempt from timely warnings.

Safety and Emergency Procedures

An evaluation has been made of the possible emergency situations that could arise, including those in which the closing and evacuation of the campuses would be required. These situations include fire, gas leaks, bomb threats, tornadoes, earthquakes, aircraft accidents, hazardous materials spills on or near a campus, power outages, flooding, snow emergencies, medical or public health emergencies, an incident at a nuclear power plant and mass violence, among others. The extent of and manner in which a shelter-in-place response or the evacuation of a portion of or entire campus would be conducted would depend on the particular incident, the immediate impact on life safety and the availability and safety of evacuation routes from the campus.

HACC Public safety and Security Officers continually monitor conditions and events on their campuses. Should they become aware of a situation that constitutes an emergency; officers will respond to, investigate, confirm and determine the nature and extent of the threat. They will request assistance from outside emergency services as the situation dictates. Should an emergency situation pose an immediate threat to the health and safety of the College or campus community, the ranking public safety and security officer or emergency response personnel on scene will determine what level response is required (shelter-in-place or the evacuation of a building, buildings or the entire campus). Using the National Incident Management System (NIMS) Incident Command System Guidelines, officers will ensure their chain of command is immediately utilized. The Executive Director of Public Safety and Security will be notified, who will then initiate the emergency immediate notification procedure through the Office of College Advancement to disseminate alert information and instructions to affected members of the College community. The Executive Director of Public Safety and Security or designee will maintain the capability to directly activate these systems in those emergencies requiring immediate action.

If you observe a situation that may create an emergency, please immediately contact your campus Public Safety and Security office. If there is an immediate threat to life, **call 911 first** and then notify HACC Public Safety and Security as soon as possible.

Emergency and Immediate Notification

The Executive Director of Public Safety and Security or designee, upon confirmation of a significant emergency or dangerous situation which poses an immediate threat to the College or campus community, or any portion thereof, will without delay and considering the safety of the community, determine the content of the notification and initiate the notification system. The Executive Director of Public Safety and Security or designee in consultation with the Office of College Advancement (OCA) and/or the College president or designee will produce and direct the OCA to disseminate the emergency notification via any or all of the following systems:

- e2Campus mass alert system
- Employee and student HAWKmail email systems
- Campus telephone systems

- Campus electronic signage
- Loudspeaker announcement
- Activation of a building emergency alarm
- Direct notification
- The College website at hacc.edu
- College official social media accounts
- MyHACC announcements

Communications systems will be selected as the Executive Director of Public Safety and Security or designee determines to be appropriate to alert the campus community of the specific emergency situation. Notifications may be issued on a collegewide basis or to directly affected members of the College community (e.g., a specific campus or buildings) as the situation dictates. This will be done unless issuing a notification will, in the professional judgment of the Executive Director of Public Safety and Security or designee and/or outside emergency responders, compromise efforts to assist a victim or to contain, respond to or otherwise mitigate the emergency.

The Public Safety and Security Department, in cooperation with emergency responders, will continually monitor the emergency situation and advise the Executive Director of Public Safety and Security as conditions change. The Executive Director of Public Safety and Security or designee may issue additional notifications and instructions to the College or campus community as the situation requires. Upon resolution of an emergency, an all-clear notification will be issued.

Shelter-in-Place

Shelter-in-place is defined as taking immediate shelter where you are. On campus, this will generally mean using a classroom or office as an enclosed shelter to protect you and others from the dangers of an emergency.

Basic Shelter-in-Place Guidance

If the building you are in is not damaged, stay inside in an interior room until you receive notification it is safe to leave. If the building is damaged, take your personal belongings and follow the evacuation routes posted in the building. Once you have evacuated the building, seek shelter at an undamaged building nearby. If College public safety and security officers and other emergency responders are on scene, follow their directions.

How to Know When to Shelter-in-Place

The primary means for communicating shelter-in-place instructions will be the e2Campus emergency alert system. You may also receive instructions directly from Public Safety and Security Officers on

The scene or by any other means of communication previously listed.

How to Shelter-in-Place

If you have received direction to shelter-in-place and it is safe to do so, or if evacuation of a building is not possible or safe, adhere to the following guidelines:

- Stay inside the building you are in or seek an interior room
- Seek shelter in the nearest undamaged building if you are outside, or follow instructions given by emergency responders
- Seek a room above ground level and turn off ventilation systems if possible in cases of the release of a noxious substance. College facilities personnel will disable any automatic systems in this situation
- Stay away from windows
- Keep your silenced cell phone available for emergency communication and updates
- Close and lock any windows or doors in the room
- For mass violence emergencies, Prevent the perpetrator from entering the room by using furniture or other heavy objects in the event doors cannot be locked
- Turn off lights and equipment in the room
- Remain calm, quiet and alert

Emergency Procedures Tests and Drills

The HACC Public Safety and Security Department conducts emergency drills and tests at least once per calendar year at all campus locations. These tests and drills may be announced or unannounced. The type of tests and drills may vary, but will be designed to assess and evaluate the procedures for a specific emergency type, such as active shooter, building fire, bomb threat, hazardous materials spill, or other emergency conditions. Depending on the type of emergency response being tested, shelter-in-place and/or the evacuation of campus building drills may be included. Tests may be a live exercise or a table-top simulation.

Whatever type of test is conducted, the HACC Public Safety and Security Department will conduct a test of one or more emergency systems in conjunction with the test or drill. The emergency systems that may be tested include the e2Campus mass notification system, building alarms and PA systems,

emergency lockdown systems, or other emergency system appropriate to the campus location and the condition being tested or drilled.

In an effort to continue to foster close working relationships with the emergency responders who serve our campus communities, representatives from local and state police, local fire and EMS, or other emergency response agencies will be invited to participate in campus drills and tests. The goal of each agency's participation is to ensure a familiarity with the personnel and facilities at the campus which they serve and help foster a strong coordination of efforts in the event of an actual emergency.

HACC will publicize its emergency procedures in conjunction with at least one emergency procedures test per calendar year. Avenues for distribution of the emergency procedures may include the HACC website, the student newspaper at each campus, printed handouts distributed at the time of the test or drill, faculty and staff newsletters, the SKI Gram, employee email and/or student HAWKmail distribution, or other College publications calculated to reach the campus community.

As required by the Clery Act, The HACC Public Safety and Security Department will document each test in a report which includes the date of the test, a description of the drill or test conducted, start and end times, and whether the test or drill was announced or unannounced. Additionally, this report will contain any deficiencies discovered in procedure or equipment, lessons learned, and the possible solutions for any deficiencies noted. The report may be distributed to any College department or local agency that plays a role in the correction of any noted deficiencies.

Drug and Alcohol Policies, Awareness and Prevention

Harrisburg Area Community College (HACC) is committed to providing a safe, healthy learning community for all its members. HACC endeavors to conform to the laws of the Commonwealth of Pennsylvania, all requirements of the Drug-Free Schools and Campuses Act (DFSCA) Codified as Part 86 of EDGAR (34 CFR Part 86), and all associated regulations, including a drug and alcohol awareness program to inform students and employees of the health risks associated with the use of illicit drugs and the abuse of alcohol. HACC's alcohol policy and procedures encourage its community to make responsible decisions about the use of alcoholic beverages, and to promote safe, legal and healthy patterns of social interaction.

In accordance with the Drug-Free Schools and Communities Act Amendments of 1989 and of 1996, and the Pennsylvania liquor laws, Title 47 and Title 18 section 6317 and the College's Student Code of Conduct, specifically prohibit the direct or indirect possession, sale, distribution, production, promotion, advertising and/or use of illegal alcohol or drugs, including unauthorized or illegal possession of alcohol or drugs, on all campuses and sites or at College-sponsored activities off campus.

Alcoholic Beverages

The use, possession, or distribution of beverages containing alcohol is governed by the laws of the Commonwealth of Pennsylvania and by College Drug and Alcohol Policy for Students and College Drug and Alcohol Workplace Policy.

The Commonwealth of Pennsylvania prohibits consumption of alcoholic beverages by anyone younger than 21 years of age. It is unlawful to sell, purchase, deliver or furnish alcoholic beverages to anyone

younger than 21 years of age or to an intoxicated person. It is unlawful to consume alcohol in a public place or to misrepresent one's age to obtain alcoholic beverages. Further, it is unlawful for anyone 21 years of age or older to sell or furnish alcoholic beverages to anyone under the age of 21.

Harrisburg Area Community College specifically prohibits the possession, sale, distribution and/or use of illicit drugs or unauthorized or illegal use or possession of alcohol on campus or at College-sponsored activities off campus.

HACC may host or allow sponsored invitation-only events where alcohol is served under strictly controlled conditions. These events will be conducted in compliance with local, state and federal liquor laws. No one under 21 years of age will be served alcoholic beverages under any circumstance. College officials or designees are authorized to request identification for age verification purposes.

Illegal Drugs

HACC prohibits illegal drugs and drug paraphernalia on property owned or controlled by the College or as part of any College activity. Drug paraphernalia is defined as any legitimate equipment, product or material that is modified for making, using or concealing illegal drugs and includes, but is not limited to bongs, roach clips, drug pipes and any items modified or adapted so they can be used to consume drugs. Drug paraphernalia found on College property will be confiscated by security and surrendered to a law enforcement agency or otherwise lawfully destroyed.

Federal drug laws prohibit the manufacture, distribution, dispensation and possession of controlled substances unless specifically permitted by statute. The government categorizes controlled substances according to Schedules I through V. Schedule I drugs have a high potential for abuse, with no accepted medical use. Schedule I drugs include, but are not limited to, heroin, marijuana, hashish, LSD and other hallucinogens. Schedule II drugs have a high potential for abuse, but some medical use, and include opium, morphine, codeine, barbiturates, cocaine and its derivatives, amphetamines, phencyclidine (PCP) and other narcotics. Schedule III, Schedule IV and Schedule V drugs have some potential for abuse, but less than Schedule I and II drugs, with Schedule III drugs having the most potential for abuse and Schedule V the least. Schedule III, IV and V drugs include chloral hydrate (IV), certain barbiturates (III and IV), benzodiazepines (IV), glutethimide (III), other depressants and narcotics (III and IV), amphetamines (III) and other stimulants (III and IV). A complete listing of controlled substances and their classifications is contained in Title 21 of the United States Code at Section 812.

Penalties for the unauthorized possession, manufacture, sale, distribution or delivery of drugs varies according to the type and quantity of drug(s), existence of prior offenses and/or whether death or serious injury resulted from the drug involved. Special federal penalties apply to the sale or distribution of controlled substances to persons under age 21 or within 1,000 feet of school, college or university property.

Commonwealth of Pennsylvania Law prohibits, among other things, the unauthorized manufacture, sale, delivery and possession of controlled substances. Consistent with Federal law, Pennsylvania classifies controlled substances according to Schedules I through V. Penalties vary according to the type of controlled substance involved. For a simple possession of a small amount of marijuana (misdemeanor), persons may be subject to 30 days imprisonment and a \$500 fine. A person may be subject to a maximum

of 15 years imprisonment and a \$25,000 fine for the manufacture, delivery or possession of a Schedule I or II controlled drug such as cocaine, PCP or LSD (felony). Sentences can be doubled for second and subsequent offenses. Sentences can also be doubled for distribution of controlled substances to persons under the age of eighteen. Penalties range from a mandatory minimum sentence of seven years and a \$50,000 fine for subsequent convictions for the manufacture, delivery or possession of 100 grams or more of a Schedule I or II controlled narcotic drug.

Enforcement

The HACC Public Safety and Security Department will report known drug or liquor law violations, including underage drinking to, and fully cooperate with, law enforcement in the investigation and prosecution of local, state, and federal drug and liquor law violations. Violations of law and college alcohol/drug policies will also be referred to student judicial authorities or the Human Resources Department as appropriate for disciplinary action.

Violations of law made known to College student judicial or Human Resources authorities by third party report or other method rather than a report to the Public Safety and Security Department may be handled as disciplinary action only. In this case, these violations are made known to the Public Safety and Security Department as CSA reports.

College sanctions for violations of law and policy will result in appropriate discipline, including warning, probation, suspension or dismissal for both students and employees. Violators may also be subjected to applicable legal sanctions, which may include fines, imprisonment and loss of financial aid eligibility. The findings of the College disciplinary review and any disciplinary penalties imposed are separate from and independent of the rulings of the criminal court system and any penalties the courts may impose on the offender.

Pursuant to Clery Act reporting requirements, violations of local or state liquor or drug laws known to HACC that result in either a disciplinary referral or an arrest by a police agency are counted and recorded in the Clery Act statistical disclosures found in this report. For Pennsylvania compliance, law drug and liquor law violations are recorded in this report's UCR disclosures under the appropriate UCR category. Law violations are also disclosed in the Daily Crime Log maintained by the HACC Public Safety and Security Office at each campus.

For Employees (DRUG AND ALCOHOL WORKPLACE POLICY, CP 895):

In compliance with the Drug-Free Workplace Act of 1988, the Drug-Free Schools and Communities Act Amendments of 1989, and other legislative requirements, all employees of the College must abide by this policy and the procedures as a condition of employment.

Employees must report any conviction involving unlawful use, possession, manufacture, distribution or dispensation of drugs or controlled substances occurring at the College or at a College event no later than five (5) days after such conviction. If the employee is engaged in the performance of a federal grant or contract, the College must notify the contracting agency within ten (10) days after receiving notice of such conviction.

For Students (DRUG AND ALCOHOL POLICY FOR STUDENTS, CP 591):

In accordance with the Drug-Free Schools and Communities Act Amendments of 1989 and the Student Code of conduct, Harrisburg Area Community College specifically prohibits the possession, sale, distribution, and/or use of illicit drugs or unauthorized or illegal use or possession of alcohol on campus or at College-sponsored activities off campus.

College sanctions for violation(s) of these policies will result in appropriate discipline including warning, probation, suspension or dismissal. Students are also subject to applicable legal sanctions, which may include fines and/or imprisonment, for use of illicit drugs or illegal use of alcohol.

Mazzitti & Sullivan Counseling Service will provide confidential referrals to agencies in the community offering rehabilitation therapy and counseling for students suffering from drug or alcohol abuse.

Prevention

HACC's Drug and Alcohol Abuse Prevention Program is administered by the Office of Human Resources. This program is designed to educate students and other members of the College community on the health risks of alcohol and illegal drugs and provide information about the availability of alcohol and drug counseling, treatment and rehabilitation programs. This program is also designed to provide information regarding the legal sanctions under local, state and federal laws for the possession, use or distribution of illegal drugs and alcohol and the disciplinary sanctions the College may impose for violations of the drug and alcohol policies. This prevention program is made available on an annual basis.

Each term, the Office of Human Resources will notify all academic credit students of the Drug and Alcohol Abuse Prevention Program in writing. All College policies and procedures are accessible via myHACC.

The Office of Human Resources will provide written information to each new employee advising of the College's Drug and Alcohol Abuse Prevention Program.

On-Campus Resources

Professional counseling services provided by Mazzitti & Sullivan are available free of charge on an individual basis to all HACC students. Mazzitti & Sullivan can be contacted 24/7 at 800-543-5080.

The student development staff at each campus periodically schedules presentations and informational sessions by outside drug and alcohol abuse prevention organizations. These presentations may be stand-alone events or included as part of another campus event. For more information on attending these events, contact the campus student development office.

HACC's Employee Assistance Program is also provided by Mazzitti & Sullivan. HACC employees and their dependents are eligible to use this program. The EAP provides assistance for drug and alcohol abuse and other personal issues. Employees seeking assistance through the EAP should contact the Office of Human Resources or directly call Mazzitti & Sullivan at 800-543-5080.

Off-Campus and Community Resources

There are many community resources available locally to each campus. Members of the College community wishing to take advantage of these services may contact their local prevention agency or request assistance from their campus staff in contacting these agencies as listed.

White Deer Run Crisis Call Center (Statewide)

866-769-6822

Dauphin County Executive Commission on Drugs and Alcohol

1100 S. Cameron St. Harrisburg, PA 17104

717-635-2254

Cumberland / Perry Drug and Alcohol Commission

16 W. High St. Suite 302

Carlisle, PA 17013 866-

240-6300 (Toll Free)

717-240-6300 (Local)

Lebanon County Commission on Drug and Alcohol Abuse

220 East Lehman St. Lebanon, PA

17046 717-274-3363 (Crisis)

717-274-0427 (General)

Lancaster County Drug and Alcohol Commission

150 N. Queen St. Lancaster, PA 17608

717-299-8023

York / Adams Drug and Alcohol Program

100 W. Market St.

York, PA 17401

717-771-9618

National Hotlines

National Alcoholism and Substance Abuse Information Center

800-784-6776

National Cocaine Hotline

800-262-2463

National Parents' Resource Institute for Drug Education (PRIDE)

800-668-9277

National Secret Witness Hotline to Report Drug Activity

800-782-7463

National Institute on Drug Abuse Drug Information Hotline

800-662-4357

Rape and Sexual Assault (Sexual Misconduct) Information and Resources

The Clery Act defines sexual assault as any sexual action by a person directed at another person either by force or the threat of force and/or without the person's consent. The activity is also considered a sexual assault when the victim is incapable of giving their consent due to age, incapacitation or mental disability. For the purposes of the Clery Act, sexual assault includes the crimes of rape, nonconsensual fondling, incest and statutory rape.

Consent may be defined as an affirmative, unambiguous and voluntary agreement to engage in a specific sexual activity during a sexual encounter. The lack of verbal and/or physical resistance does not imply or affirm consent. The Commonwealth of Pennsylvania does not specifically define consent in reference to sexual activity under law. Consent is considered to be generally defined by its common legal definition.

The Clery Act defines **rape** as *“non-consensual sexual intercourse involving penetration, no matter how slight, of the vagina or anus with any body part or object, or oral penetration by a sex organ of another person.”* Rape may also occur if the victim is incapable of providing consent due to intoxication, mental disability or age. This definition also includes attempts to commit rape.

Under Pennsylvania law (PA CS Title 18 Subsections 3121), rape occurs when sexual intercourse is achieved against a victim under the following circumstances:

1. By forcible compulsion.
2. By threat of forcible compulsion that would prevent resistance by a person of reasonable resolution.
3. (Against a person) who is unconscious or where the person knows that the complainant is unaware the sexual intercourse is occurring.
4. Where the person has substantially impaired the complainant's power to appraise or control his or her conduct by administering or employing, without the knowledge of the complainant, drugs, intoxicants or other means for the purpose of preventing resistance.
5. (Against a person) who suffers from a mental disability which renders the complainant incapable of consent.

Further, under Clery and UCR (Uniform Crime Reporting) definitions, the Pennsylvania Crimes Code sections relating to sexual assault (PA 18 CS § 3124.1), involuntary deviate sexual intercourse (PA 18 CS § 3123) and aggravated indecent assault (PA 18 CS § 3125) are considered rape for the purposes of Clery and PA UCR reporting.

Fondling is defined by the Clery Act as *“the touching of the private body parts of another person for the purpose of sexual gratification, without the consent of the victim and/or by force or threat of force or where a person is incapable of giving consent due to age, incapacitation or mental disability.”*

Under Pennsylvania law (PA 18 CS § 3126), fondling is called indecent assault and occurs when the person has indecent contact with the complainant, causes the complainant to have indecent contact with the person or intentionally causes the complainant to come into contact with seminal fluid, urine or feces for the purpose of arousing sexual desire in the person or the complainant and:

1. the person does so without the complainant's consent;
2. the person does so by forcible compulsion;
3. the person does so by threat of forcible compulsion that would prevent resistance by a person of reasonable resolution;
4. the complainant is unconscious or the person knows that the complainant is unaware the indecent contact is occurring;
5. the person has substantially impaired the complainant's power to appraise or control his or her conduct by administering or employing, without the knowledge of the complainant, drugs, intoxicants or other means for the purpose of preventing resistance;
6. the complainant suffers from a mental disability which renders the complainant incapable of consent;
7. the complainant is less than 13 years of age; or
8. the complainant is less than 16 years of age and the person is four or more years older than the complainant and the complainant and the person are not married to each other.

Incest is defined by the Clery Act as ***“sexual intercourse between persons related to each other within the degrees wherein marriage is prohibited by law.”***

Under Pennsylvania law (PA 18 CS § 4302), incest occurs when the persons are related as follows: ancestor or descendant, a brother or sister of the whole or half blood or an uncle, aunt, nephew or niece of the whole blood.

Statutory Rape is defined by the Clery Act as ***“sexual intercourse with a person who is under the statutory age of consent.”***

Under Pennsylvania Law (PA 18 CS § 3122.1) statutory rape is called statutory sexual assault. Statutory sexual assault occurs when a person has sexual intercourse with another person who is under the age of 16 and is four or more years older and is not married to the underage person. Persons under the age of 13 cannot legally consent regardless of age difference.

For Pennsylvania UCR reporting purposes, fondling, incest, and statutory rape are counted and classified as “sex offenses” per UCR rules. Additionally, PA UCR statistics contained in this report will include the following crimes as sex offenses: indecent exposure (PA 18 CS § 3127), open lewdness (PA 18 CS § 5901),

and sexual intercourse with an animal (PA 18 CS § 3129).

If the crimes of incest or statutory rape are achieved by force or threat of force, they are classified and counted as rape in both the Clery and PA UCR statistical disclosures.

The Clery Act, as amended by the 2013 VAWA (Violence Against Women Act) reauthorization, and in accordance with Federal Title IX requirements, further prohibits acts of stalking, dating violence and domestic violence. In compliance with these requirements, these acts are included as sexual misconduct under this policy and are subject to the same investigative and disciplinary policies outlined in this section.

Under the Clery Act, **domestic violence** is defined as a *“felony or misdemeanor crime of violence committed by a current or former spouse or intimate partner of the victim; by a person with whom the victim shares a child in common; by a person who is cohabitating with, or has cohabitated with, the victim as a spouse or intimate partner; by a person similarly situated to a spouse or intimate partner under the domestic or family violence laws of the jurisdiction in which the crime of violence occurred; by any other person against an adult or youth victim who is protected from that person’s acts under the domestic or family violence laws of the jurisdiction in which the crime of violence occurred.”*

The Commonwealth of Pennsylvania law defines domestic abuse as knowingly, intentionally or recklessly causing bodily injury of any kind, causing fear of bodily injury of any kind, assault (sexual or not sexual), rape, sexually abusing minor children, or knowingly engaging in a repetitive conduct toward a certain person (i.e. stalking) that puts them in fear of bodily injury. These acts can take place between family or household members, sexual partners or those who share biological parenthood in order to qualify as domestic abuse. There is no separate criminal law section that addresses domestic violence specifically. Police officers responding to a report of domestic abuse are required by law to make an arrest on probable cause allegations of domestic abuse. There is no separate criminal charge in the Pennsylvania Crimes Code for domestic violence or abuse. Persons arrested for domestic violence / abuse will be charged with crimes such as assault.

For the purposes of Clery Act disclosures and College disciplinary action, domestic violence is counted as any felony or misdemeanor crime of violence under PA Title 18 Consolidated Statutes (Crimes Code) in which the victim and offender meet one or more of the Clery Act definitions set above.

Dating violence is defined by the Clery Act as *“violence committed by a person who is or has been in a social relationship of a romantic or intimate nature with the victim. The existence of such a relationship shall be determined based on the reporting party’s statement and with consideration of the length of the relationship, the type of relationship and the frequency of interaction between persons between the persons involved in the relationship. For the purposes of this definition, dating violence includes, but is not limited to, sexual or physical abuse or the threat of such abuse.”*

Pennsylvania law does not have a separate definition or crime category for dating violence as defined. For the purposes of Clery Act disclosures and College disciplinary action, dating violence includes any felony or misdemeanor crimes of violence previously listed when the victim and offender are in a relationship as described above but not in a relationship that would qualify the crime as a domestic violence incident. Dating violence also includes other crimes which may be of a lower grading, such as physical harassment (PA 18 CS § 2709 (a)(1)).

Threats to commit any act of violence or abuse are also counted as a dating violence crime.

Stalking is defined by the Clery Act as *“engaging in a course of conduct that would cause a reasonable person to fear for the person’s safety or the safety of others; or suffer substantial emotional distress. For the purposes of this definition, a course of conduct is two or more acts, including, but not limited to, acts in which the stalker directly, indirectly, or through third parties, by any action, method, device, or means, follows, monitors, observes, surveils, threatens, or communicates to or about a person, or interferes with a person’s property.”*

A reasonable person is a person under similar circumstances and with similar identities to the victim. Substantial emotional distress means significant mental suffering or anguish that may, but does not necessarily require, medical or other professional treatment or counseling.

The Commonwealth of Pennsylvania defines stalking under PA 18 CS §2709.1 as

follows: A person commits the crime of stalking when the person either:

1. engages in a course of conduct or repeatedly commits acts toward another person, including following the person without proper authority, under circumstances which demonstrate either an intent to place such other person in reasonable fear of bodily injury or to cause substantial emotional distress to such other person; or
2. engages in a course of conduct or repeatedly communicates to another person under circumstances which demonstrate or communicate either an intent to place such other person in reasonable fear of bodily injury or to cause substantial emotional distress to such other person.

As the Pennsylvania law requires evidence of the offender’s intent to place a victim in reasonable fear or suffer substantial emotional distress, instances coded as simple harassment for purposes of PA UCR compliance may be counted as stalking for the purposes of Clery Compliance if they meet the definition of stalking set forth under the Clery Act. Clery requires consideration of the victim’s perception of fear for their or another’s safety or the use of the ‘reasonable person’ standard in which someone of similar circumstances and identities would feel fear for their safety and/or suffer substantial emotional distress.

HACC collectively terms rape, sexual assault, non-Clery (UCR) sexual offenses, and other inappropriate sexually based or motivated behavior as sexual misconduct. This includes rape and all of the previously defined sex offenses as well as sexual harassment, stalking, dating violence, and domestic violence. All sexual misconduct is prohibited on any HACC owned or controlled location by College policy.

Investigation and Disciplinary Procedures

Victims of sexual misconduct are strongly encouraged to report the crime immediately to both police and Campus Public Safety and Security. Immediate reporting will assist authorities in the preservation of evidence and the apprehension of the offender. Immediate reporting also facilitates College and law enforcement authorities in assisting the victim of a sexual misconduct in getting any help they need to recover.

Upon report of sexual misconduct to the Public Safety and Security Department, officers will:

- Confidentially interview the victim and any witnesses to ascertain the facts of the case
Make every effort to ensure evidence is preserved
- Advise the victim to seek immediate medical attention and ensure the victim promptly receives medical attention if he or she wishes
- Encourage the victim to report the incident to the police. Public Safety and Security officers are required to contact the police for the victim upon request. Public Safety and Security officers and College officials will fully cooperate with the police investigation
- Advise the victim and witnesses of College and community counseling and crisis services and assist the victim in contacting them, if desired

If the victim consents, the complaint is referred to the Director of Student Conduct (student offenders) or Human Resources Office (employee offenders). These authorities will conduct a prompt, fair and impartial investigation in partnership with the Public Safety and Security Department and any involved police investigators.

Please note: Any HACC employee learning of an act covered under Title IX must notify the Title IX Coordinator. A separate Title IX investigation may be conducted with the consent of the victim or without as required by law. The Title IX coordinator is responsible to ensure the behavior ceases, the College acts reasonably to prevent recurrence, and the effects of the behavior on the victim and community are and community are mitigated. Wherever possible, a Title IX investigation is conducted in parallel with student disciplinary, employee disciplinary, Public Safety and Security, and law enforcement investigations. The Title IX investigative process is subject to the same procedural requirements as follows.

If the accused is known or is discovered in this process, is a HACC student, and a preponderance (more likely than not) of the evidence supports the validity of the accusation, disciplinary action may be taken. The institution may impose sanctions following a final determination of an internal disciplinary proceeding regarding sexual misconduct. Sanctions may include disciplinary probation, suspension, assignment of restitution, no contact directives, requiring psychological evaluation and counseling at the accused's expense, barring from college property and/or expulsion. Both the accuser and the accused have a right to have an advisor or support person of their choice (e.g. parent(s) / legal counsel) present during the College disciplinary process, to include any hearing, meeting, conference or other procedural action. The extent to which an advisor of choice may participate in disciplinary procedures is at the discretion of the institution and hearing officials. The advisors for both accuser and accused shall have the rules regarding participation in hearings applied equally. Both the accuser and the accused will be informed in writing of the rulings made in any College disciplinary hearing. Written notification will include findings, sanctions imposed (if any), and the rationale therefore. Delivery of written notification to both parties will occur as closely to simultaneously as possible, without unnecessarily bringing those in conflict into close proximity with each other. All parties will be informed of the appeal processes, and their rights to exercise a request for appeal. Should any change in outcome occur prior to finalization, all parties will be informed in writing in a timely manner and notified when the results of the resolution process become final.

In cases where an accused is a HACC employee, a fact-finding investigation is conducted by the Office of Human Resources that will include one or more investigatory meetings each with the accuser, accused, witnesses, or others who may be able provide evidentiary information. At the conclusion of the fact-finding investigation, disciplinary action may be taken in accordance with College policies. The Director of Employee Relations or designee will determine the appropriate level of discipline in consideration of institutional policy and the nature of the evidence discovered in the investigation.

As with student sexual misconduct disciplinary proceedings, employee sexual misconduct investigations and disciplinary determinations are conducted on a preponderance evidence standard. Both accuser and accused are afforded the same rights as the student process, including the rights to an advisor of choice. The extent to which an advisor of choice may participate in disciplinary procedures is at the discretion of the institution and investigating officials. As with the student disciplinary process, the College is held to the same legal requirements under the Violence Against Women Act (VAWA) to ensure both the accuser and the accused will be informed in writing of the rulings made in any College sexual misconduct disciplinary proceeding. Written notification will include findings, sanctions imposed, and the rationale therefore. Delivery of written notification to both parties will occur as closely to simultaneously as possible, without unnecessarily bringing those in conflict into close proximity with each other. All parties will be informed of the appeal processes and their rights to exercise a request for appeal. Should any change in outcome occur prior to finalization, all parties will be informed in writing in a timely manner and notified when the results of the resolution process become final.

The possible sanctions which may result from an employee sexual misconduct investigation are informal counseling, verbal warning, written reprimand, final written reprimand, suspension, termination of employment and barring from HACC property. The Office of Human Resources is also empowered to issue and enforce no contact orders for employees.

HACC students and employees may access any of the referenced policies and procedures for their review using the myHACC portal. For students, the document search is located under the “registration and records” tab. For employees, the document search is located under the “home” tab.

The findings of the College disciplinary review and any disciplinary penalties imposed are separate from and independent of the rulings of the criminal court system and any penalties the courts may impose on the offender.

HACC recognizes victims have a right to refuse police involvement and College disciplinary action. In this case, only anonymous, non-identifying information will be included in statistical disclosures, Daily Crime Log, or timely warning notices if a continuing threat to the College community exists. Any information released in a Timely Warning notice will not include information that would easily lead to a victim’s identification.

Victims not wishing to involve police or DPSS, but still wishing to seek a College disciplinary proceeding and / or Title IX investigation may contact the College Director of Student Conduct, Title IX coordinator and/or Office of Human Resources directly to initiate an investigative review.

HACC is obligated by law to provide victims of alleged sexual misconduct with reasonable academic accommodations and protective measures upon request. Under the guidance of the Director of Student Conduct/Director of Employee Relations and Title IX coordinators, academic advisors and

student affairs personnel will actively work with victims to provide reasonable academic and/or employment accommodations and protective measures.

HACC will provide written notification to victims of their rights and outlining institutional disciplinary policy and available options for College and community assistance. These include requesting changes to their academic situation, transportation, working situation, college no contact orders, on campus security escorts, and the contacts for obtaining legal orders of protection. This written information is available to victims regardless if the incident occurred on or off campus.

Victims electing not to officially report sexual misconduct to Public Safety and Security, law enforcement and / or seek disciplinary action may still elect to utilize College and community services including counseling, academic accommodations, no contact orders and on campus security escorts. Requests for these College services can be made at by contacting the Director of Student Conduct or Title IX coordinators. Employees should contact the Office of Human Resources or Title IX coordinator. These offices will also provide assistance in contacting off campus community resources if requested.

HACC values victim confidentiality in conducting investigations, providing reasonable accommodations and protective measures and incident resolution. Personal identifying Information is shared internally between only College officials who need to know, but a tight circle is kept. Where information must be shared among College officials and/or outside community organizations or authorities to permit an investigation to move forward or to provide a reasonable accommodation or protective measure, the victim will be informed in advance. HACC's Title IX coordinators are responsible for ensuring only necessary victim information is provided only to those with a need to know. Privacy of the records specific to the investigation are maintained in accordance with Pennsylvania law and the federal FERPA statute. Any public release of information to comply with the timely warning, daily crime log and/or statistical disclosure provisions of the Clery Act or other publicly available record keeping will not include personally identifying information or information that could easily lead to a victim's identification.

HACC is required to provide training on an annual basis to all investigators and student judicial authorities. Training focuses on domestic violence, dating violence, sexual assault, stalking, sexual harassment, retaliation and other behaviors can be forms of sex or gender discrimination covered by Title IX. Training will help those decision-makers in the process to protect the safety of victims and to promote accountability for those who commit offenses.

Sexual Harassment

Sexual harassment is a form of misconduct that undermines the integrity of the academic environment and will not be tolerated. All members of the College community, especially officers, faculty and other individuals who exercise supervisory authority have an obligation to promote an environment is free of sexual harassment. All HACC employees are considered "responsible employees" under Title IX and have an obligation to report sexual harassment to the College Title IX coordinators.

Retaliation Policy

HACC prohibits any form of retaliation by any employee or student against another employee or student who has made a complaint in good faith. Persons violating this policy are subject to disciplinary action.

Student Procedures

In the event a sexual assault, act of stalking, dating violence or domestic violence does occur, HACC takes the matter very seriously. Anyone with knowledge about a sexual assault is encouraged to report it immediately. If you are sexually assaulted:

1. Go to a safe place and speak with someone you trust. Tell this person what happened. If there is any immediate danger, contact your campus Public Safety and Security office if you are on campus or call 911 if you are off campus.
2. Preserve any written documentation, emails or text messages regarding the offense.
3. For your safety and well-being, immediate medical attention is encouraged. Further, being examined as soon as possible, ideally within 72-120 hours (3-5 days), is important in the case of sexual assault. The hospital will arrange for a specific medical examination at no charge. To preserve evidence, it is recommended you do not bathe, shower, douche, eat, drink, smoke, brush your teeth, urinate, defecate or change clothes before the exam. Even if you have already taken any of these actions, you are still encouraged to have prompt medical care. Additionally, you are encouraged to gather bedding, linens or unlaundered clothing and any other pertinent articles that may be used for evidence. Secure them in a clean **paper** bag or clean sheet. It is very important to preserve evidence to help in proving an alleged criminal offense as well as assist in obtaining legal orders or protection.
4. Having a sexual assault medical examination conducted at a hospital does not obligate you to make a police report or talk to police about what happened if you do not want to at that time. NOTE: Doctors and nurses may be obligated to report a sexual assault of a minor to the police under law.
5. Even after the immediate crisis has passed, consider seeking support from Mazzitti & Sullivan Counseling Services or one of the local rape crisis centers listed at the end of this section.
6. Contact the Director of Student Conduct or Title IX Coordinator if you need assistance with concerns, such as no-contact orders or other protective measures. They will also assist in any needed advocacy for students who wish to obtain protective or restraining orders from local authorities.

Education and Prevention

It is HACC's policy to offer programming to prevent domestic violence, dating violence, rape, sexual assault (including stranger and known offender assaults) and stalking each year. Educational programs are offered to raise awareness for all incoming students and employees and are conducted during new student and new employee orientation sessions. These programs and others offered throughout the year include strong messages communicating that HACC prohibits dating violence, domestic violence, sexual assault, stalking, and other sexual misconduct and awareness and primary prevention (including normative messaging, environmental management and bystander intervention), and discuss the Pennsylvania and Federal definitions of domestic violence, dating violence, rape, sexual assault, stalking and consent in reference to sexual activity. Programs also offer information on risk reduction, how to recognize warning signals and how to avoid potential attacks without victim-blaming approaches.

The Office of Human Resources requires all HACC employees to complete a tracked sexual misconduct / Title IX responsibility and reporting training once per year. This training includes information on recognizing, responding to, and properly reporting rape, sexual assault, dating violence, domestic violence, stalking, sexual harassment, and other sexual misconduct. This is in addition to additional awareness and informational programs they promulgate on an ongoing basis for employee education and development.

The student development staff at each campus periodically schedule ongoing prevention programming, including presentations and informational sessions by outside rape and sexual assault prevention organizations. These presentations may be stand-alone events or included as part of another campus event. For more information on attending these events, contact the campus student development office.

Bystander Intervention

There are a number of simple, safe and effective things everyone can do to help others and help reduce the likelihood of sexual assaults. A few of these are listed here courtesy of notalone.gov.

1. Talk to your friends honestly and openly about sexual assault.
2. Don't just be a bystander—if you see something, intervene in any way you can.
3. Trust your gut. If something looks like it might be a bad situation, it probably is.
4. Be direct. Ask someone who looks like they may need help if they're okay.
5. Get someone to help you if you see something—enlist a friend, residential advisor, teacher, or parent to help step in.
6. Keep an eye on someone who has had too much to drink.
7. If you see someone who is too intoxicated to consent, help them leave safely.

8. Recognize the potential danger of someone who talks about planning to target another person at a party.
9. Be aware if someone is deliberately trying to intoxicate, isolate, or corner someone else.
10. Create a distraction, draw attention to the situation, or separate the people you are concerned about.
11. Understand if someone does not or cannot consent to sex, it is rape.
12. Never blame the victim.

Civil Protection Orders

The Commonwealth of Pennsylvania offers three types of legal orders through the court system, which hold the force of civil law as set forth in the Protection from Abuse (PFA) Act and the Protection of Victims of Sexual Violence or Intimidation (PSVI) Act. These orders are as follows:

- **Protection from Abuse Order (PFA):** This type of order is available to victims who have or have had an intimate, family, or household relationship with the offender. This includes spouses, ex-spouses, domestic partners, dating partners, sexual partners, persons who have a child in common, parents, children, other blood relations and those related by marriage. PFAs offer numerous forms of relief, which include, but are not limited to no contact directives, changes in living arrangements from the victim or offender, monetary restitution, custody and protective measures for children, or other appropriate relief, as the court deems appropriate.
- **Sexual Violence Protection Order (SVP):** This type of order is available to victims of sexual violence who do not have an intimate relationship as defined in the PFA act (e.g. offenders may be strangers, acquaintances, co-workers, classmates, etc.). Relief available under this order type includes no contact directives and any other appropriate relief requested by the victim and approved by the court.
- **Protection from Intimidation Order (PFI):** This order type is available to victims under the age of 18 who are victims of harassment or stalking committed by offenders who are 18 or older.
- **Out of State Protection Orders:** The Commonwealth of Pennsylvania recognizes and will enforce protective orders lawfully issued by jurisdictions out of state. For example, a no contact order issued by a Maryland court will be recognized and enforced by Pennsylvania Courts of Common Pleas.

Persons violating protective orders are subject to arrest by police. HACC will assist in the enforcement of protective orders by contacting the police to arrest the offender and will provide on campus security escorts to the petitioner as requested. Persons wishing assistance in the enforcement of a protective order on HACC property must make the Public Safety and Security office at the campus or campuses at which they attend classes or work aware of the order and provide a copy of the order.

Please note: Protective orders contain information regarding the nature of the offenses in the complaint. Any such information disclosed to HACC which constitutes a Title IX violation under its jurisdiction may require a Title IX investigation to be conducted by HACC. In this case, confidentiality cannot be guaranteed. Any such information received by HACC which constitutes a previously unknown Clery Act crime occurring within HACC's Clery Act Geography will require us by law to disclose the crime as non-identifying statistical, crime log, and/or timely warning notices as appropriate.

Obtaining a Protective Order

To request a PFA, SVP, or PFI, contact the court prothonotary's office in the county in which you live, work, or attend school. You may also apply in the county in which the offender lives or in which the abuse occurred. Parents or Guardians may petition on behalf of minors.

For assistance in obtaining a protective order, contact a local domestic violence organization, rape crisis center or advocacy center. The contact information for many of these off-campus resources are listed at the end of this section. Many of these community-based organizations can provide legal services and advocacy as well as other confidential services to assist victims of sexual violence.

On-campus assistance may be requested by contacting the Director of Student Conduct or Title IX coordinator. Employees may also contact the Office of Human Resources. These offices can provide written information regarding institutional disciplinary policy, on campus protective measures and accommodations as well as victim advocacy and assistance in contacting court and community resources.

Megan's Law\Sex Offender Registries

The Commonwealth of Pennsylvania requires all individuals convicted of sexual offenses in Pennsylvania to register their address of residence and place of employment or study with the Pennsylvania State Police.

This information is made available via the Internet so the public may be aware when an offender is present in their community. For more information about the Pennsylvania Megan's Law or to view the offender database, visit pameganslaw.state.pa.us. The U.S. Department of Justice maintains a national registry of sex offenders compiled from each state's registry. This database is accessible online at nsopw.gov.

Campus Contacts

Deputy Title IX Coordinator

Vicki Van Hise
Lancaster Campus, RM 332
717-358-2972
vlvanhis@hacc.edu

Deputy Title IX Coordinator

Maya Green
Harrisburg Campus, TL205
717-736-4133
mdgreen@hacc.edu

College Title IX Coordinator

Dr. Armenta Hinton
Ted Lick Central Administration Building 112E
717-736-4102
ahinton@hacc.edu

Court Prothonotary contacts within
the counties where HACC
campuses are located:

Adams

717-337-9834

York

717-771-9611

Dauphin

717-780-6520

Lancaster

717-299-8282

Lebanon

717-228-4418

Off -Campus Crisis Intervention and Community Resources

**Rape, Abuse & Incest National Network (RAINN)
National Sexual Assault Hotline**
800-656-4673

**Pennsylvania Coalition Against Rape
Crisis and Victim Assistance Hotline (Statewide)**
888-772-7227

**True North Mobile Crisis Center
(Adams, Fulton, and York Counties)**
866-325-0339 or 717-637-7633

Sexual Assault Hotline (Adams/Hanover)
717-334-9777 or 800-787-8106

Cumberland and Perry County Crisis Center
717-763-2222
717-243-6005
866-350-HELP

YWCA Carlisle Rape Crisis Hotline
888-727-2877

Dauphin County Crisis Intervention (Harrisburg)
717-232-7511

YWCA Harrisburg
800-654-1211 24-hour Sexual Assault Crisis
877-874-HERO Child Sexual Abuse Hotline

**Pennsylvania Coalition Against Domestic Violence
Resource Hotline**
800-799-7233

Lancaster County Crisis Intervention
717-394-2631

YWCA Lancaster Sexual Assault Hotline
717-392-7273

Lebanon County Crisis Intervention
717-274-3363

**Sexual Assault Resource and Counseling Center of
Lebanon County**
717-272-5308 (Hotline)

Domestic Violence Intervention of Lebanon County
866-686-0451
717-273-7190 (Hotline)

York County Crisis Intervention
717-851-5320 or 800-673-2496

**YWCA York / ACCESS York
(Victim Assistance Services) 800-
262-8444 Domestic Violence
800-422-3204 Sexual Violence
717-637-2235 Hanover Area Domestic Violence**

Dauphin County Victim/Witness Assistance
888-292-9611

Statistical Disclosures – Clery Act

In compliance with the Clery Act, all known Clery Act reportable crimes must be submitted annually to the U.S. Department of Education via its web-based reporting system. HACC is required to publish in the HACC Annual Security Report statistics of Clery crimes for the last three years that were reported on campus property, college-owned or controlled non-campus property at which educational programs or support are conducted, and any public property within or immediately adjacent to and accessible from a campus property.

Crime data is collected from The HACC Public Safety and Security Department reports and records, student judicial and BIT records, Campus Security Authority (CSA) disclosures, and data received from local or state police agencies in the campus or non-campus location jurisdiction.

HACC must make a good faith effort to request data on all reportable crime categories from the local and state police agencies, which have jurisdiction over a campus, and its adjacent and accessible public property, or any non-campus location.

Clery reportable crimes use the FBI's UCR (Uniform Crime Reporting) program definition for all categories except fondling, incest and statutory rape, which use FBI NIBRS (National Incident-Based Reporting System) program definitions. Both attempted and completed crimes are included.

Clery's reportable crime categories are as follows:

- Criminal Homicide
 - Murder and Non-negligent Manslaughter
 - Negligent Manslaughter
- Sexual Assault \ Sexual Offenses
 - Rape (UCR Definition)
 - Fondling (NIBRS Definition)
 - Incest (NIBRS Definition)
 - Statutory Rape (NIBRS Definition)
- Robbery
- Aggravated Assault (includes attempts to murder)
- Burglary (includes entry by force, entry without force and attempts to burglarize)
- Motor Vehicle Theft
- Arson

The amendments made to the Clery Act by the 2013 reauthorization of the Violence Against Women Act (VAWA) add additional categories to Clery's reportable crimes. These crimes are reported using the definition assigned to them under the VAWA. They are as follows:

1. Dating Violence
2. Domestic Violence
3. Stalking

Certain crimes are only Clery reportable when committed as a hate crime. A hate crime occurs when a crime is committed against a person or property and is motivated, whole or in part, by the offender's bias against the victim's actual or perceived race, gender, gender identity, religion, disability, sexual orientation, ethnicity, or national origin.

Clery hate crimes may be any of the previously listed Clery Act crimes (excluding VAWA-defined crimes) or any of the following crimes that are not otherwise reported in the Clery Act statistics:

1. Larceny/theft
2. Simple assault
3. Intimidation
4. Vandalism/property destruction

The Clery Act further requires violations of local or state drug, liquor and weapons laws be disclosed as having been referred to student judicial affairs for college disciplinary action or to a law enforcement agency, which results in the arrest of the offender. In cases where both a referral and an arrest have been made, only the arrest is counted.

In instances where more than one Clery reportable crime is committed in an incident, the UCR hierarchy rule is applied. The hierarchy rule states only the most serious offense is counted in multiple crime incidents.

NOTE: There are multiple exceptions to the hierarchy rule under the Clery Act. The hierarchy rule does not apply to arson, hate crimes, VAWA offenses, rape and sexual assault coincident with murder, or drug, liquor, and weapons law violations referrals\arrests. In cases of arson or VAWA offenses coincident with other reportable criminal offenses, the arson or VAWA offense is counted in addition to the most serious offense as well as any hate and\or drug, liquor, and weapons law violation referrals\arrests that also occurred during the same incident. For hate crime, all bias motivated crimes that occur in a single incident are counted and disclosed as hate crimes. However, the hierarchy rule will apply when hate crimes are counted under the general offense category (ex: A bias motivated aggravated assault and rape occurs in the same incident. Both are counted in the hate crimes category, but only the rape would be counted in the general offenses.) In cases of sexual assault (rape, fondling, incest, or statutory rape) occurring in the same incident as a murder both the murder and the sexual assault offense would be counted. In cases where a drug, liquor, or weapons law violation occurs coincident to other crimes and the offender was arrested or referred for disciplinary action, the referral

or arrest is counted and disclosed in addition to the most serious Clery Act criminal offense and any VAWA and/or hate crimes that were also committed during an incident.

Crimes determined to be unfounded (false or baseless) by the investigation of a sworn law enforcement officer are disclosed at the end of each campus section in narrative format. Unfounded crimes are not counted in the totals for the offense category. Clery offenses ruled unfounded are reported to the US Department of Education's web-based reporting system.

For a breakdown of Clery Act geography by campus, see the maps for each campus included in the appendix at the end of this report.

This section provides crime statistics in Clery Act required format for each HACC campus.

Gettysburg Campus

731 Old Harrisburg Road

Gettysburg, PA 17325

Public Safety and Security and Emergency Assistance: 717-780-2568

On Campus: This category includes any Clery-reportable crimes occurring within the property boundaries of the HACC Gettysburg Campus.

Non-campus: This category includes any Clery reportable crimes occurring at buildings or property HACC Gettysburg Campus controls by rent, lease or other use agreement used in direct support of, or in relation to the College's educational purposes, is frequently used by students, and is not within the same reasonably contiguous geographic area of the campus. Examples of this category include off-campus class sites and facilities used by campus student organizations for multi-night trips, among others. This category does not include sites used by programmatic agreement, such as nursing clinical sites or internship sites. (Note: Non-campus locations do not have a public property reporting requirement. Disclosures for leased classroom space are for class hours only. Not all locations are used every year during a reporting period.)

Public Property: This category includes Clery-reportable crimes occurring within the span of Old Harrisburg Road immediately adjacent to, accessible from HACC's Gettysburg Campus property and the Eisenhower Center campus immediately adjacent to, and accessible from the HACC's Gettysburg Campus. Note the ACNB Bank, the Weis Food Markets store, LIU Office and Adams County Head Start are not included, as they are owned or leased by private organizations.

Patrol Jurisdiction: This term refers to the area where HACC Public Safety and Security Officers may patrol, respond to incidents, provide services and function as security officers. For the Gettysburg Campus, this includes the areas considered on campus for Clery Act geography purposes.

In addition, HACC Gettysburg Public Safety and Security Officers provide security services to the Adams County Head Start facility and leased parking areas including the former "B" lot and behind the Head Start facility by agreement with the Head Start management. Adams County Head Start is a tenant of HACC occupying a HACC-owned portion of the campus building. HACC does not exercise control over this space, nor is it frequently used by students.

By agreement with Weis Markets, Gettysburg officers patrol and provide vehicle assistance services in the Weis leased areas of the parking lot. Gettysburg officers do not provide security services to the Weis Markets facility.

HACC Gettysburg officers do not patrol or provide security services to the ACNB Bank building or its parking areas accessible from the campus property.

HACC Gettysburg officers are authorized to traverse the public roadways considered part of the Gettysburg Campus' public property geography, but are not authorized to respond to incidents occurring within the roadway unless acting on the direction of a municipal or state law enforcement official. Gettysburg officers do not patrol or provide security services for the Eisenhower Center. Please see the Gettysburg Campus Clery Act geography map in the appendix at the end of this report. (Pg. 65)

Gettysburg Campus

Clery Act Reportable Crimes	On Campus			Non-Campus Property			Public Property		
	2019	2020	2021	2019	2020	2021	2019	2020	2021
Murder/Non-Negligent Manslaughter	0	0	0	0	0	0	0	0	0
Negligent Manslaughter	0	0	0	0	0	0	0	0	0
Sexual Offenses									
Rape	0	0	0	0	0	0	0	0	0
Fondling	0	0	0	0	0	0	0	0	0
Incest	0	0	0	0	0	0	0	0	0
Statutory Rape	0	0	0	0	0	0	0	0	0
Robbery	0	0	0	0	0	0	0	0	0
Aggravated Assault	0	0	0	0	0	0	0	0	0
Burglary									
Forcible Burglary	0	0	0	0	0	0	0	0	0
Non-Forcible Burglary	0	0	0	0	0	0	0	0	0
Attempted Burglary	0	0	0	0	0	0	0	0	0
Motor Vehicle Theft	0	0	0	0	0	0	0	0	0
Arson	0	0	0	0	0	0	0	0	0

Arrests and Disciplinary Actions		On Campus			Non-Campus Property			Public Property		
		2019	2020	2021	2019	2020	2021	2019	2020	2021
Drug Law Violations	Disciplinary Referrals	0	0	0	0	0	0	0	0	0
	Arrests by Police	0	0	0	0	0	0	0	0	0
Liquor Law Violations	Disciplinary Referrals	0	0	0	0	0	0	0	0	0
	Arrests by Police	0	0	0	0	0	0	0	0	0
Weapons Law Violations	Disciplinary Referrals	0	0	0	0	0	0	0	0	0
	Arrests by Police	0	0	0	0	0	0	0	0	0

VAWA Crimes	On Campus			Non-Campus Property			Public Property		
	2019	2020	2021	2019	2020	2021	2019	2020	2021
Dating Violence	1	0	0	0	0	0	0	0	0
Domestic Violence	0	0	0	0	0	0	0	0	0
Stalking	0	0	0	0	0	0	0	0	0

There were no hate or bias-related crimes, as defined by federal law, and there were no crimes ruled UNFOUNDED by investigation of a sworn law enforcement entity occurring within the Gettysburg Campus reporting geography for 2019, 2020 or 2021.

Harrisburg Campus

One HACC Drive Harrisburg, PA 17110

Public Safety and Security Department Whitaker Hall Room 131

Public Safety and Security and Emergency Assistance: 717-780-2568

Campus Information Center: 717-780-2620

On Campus: This category includes any Clery-reportable crimes occurring within the property boundaries of the Harrisburg Campus.

Non-campus: This category includes any Clery reportable crimes occurring at buildings or property that HACC Harrisburg controls by rent, lease or other use agreement that is used in direct support of, or in relation to the College's educational purposes, is frequently used by students, and is not within the same reasonably contiguous geographic area of the campus. Examples of this category include off campus class sites, facilities used for multi-night student trips, athletic facilities used by the Athletic Department for offsite training, games or classes, and offsite facilities used for college events such as convocation ceremonies. This category does not include site used by programmatic agreement, such as nursing clinical sites or internship sites. (Note: Non-campus locations do not have a public property reporting requirement. Disclosures for leased space are for hours of use only. Not all locations are used every year during a reporting period.) Collegewide disclosures for student lodging controlled by written agreement for study abroad, if applicable, are reported in this section.

Public Property: This category includes any Clery-reportable crimes occurring within the span of Industrial Road and Wildwood Park Drive immediately adjacent to and accessible from the Harrisburg Campus. Also included is the Dauphin County-owned parcel that abuts campus property at its eastern border and the Capital Area Greenbelt rest area near the Shumaker Public Safety Center.

Patrol Jurisdiction: This term refers to the area where HACC Public Safety and Security Officers may patrol, respond to incidents, provide services and function as security officers. For the Harrisburg Campus, officers are authorized to traverse the public roadways considered as part of Harrisburg Campus' public property geography, but are not authorized to respond to incidents occurring within the roadway unless acting on the direction of a municipal or state law enforcement official. Harrisburg Campus has 24-hour security patrol.

Please see the Harrisburg Campus Clery Act geography map in the appendix at the end of this report. (Pg. 66)

Harrisburg Campus

Clery Act Reportable Crimes	On Campus			Non-Campus Property			Public Property		
	2019	2020	2021	2019	2020	2021	2019	2020	2021
Murder/Non-Negligent Manslaughter	0	0	0	0	0	0	0	0	0
Negligent Manslaughter	0	0	0	0	0	0	0	0	0
Sexual Offenses									
Rape	0	0	0	0	0	0	0	0	0
Fondling	1	0	0	0	0	0	0	0	0
Statutory Rape	0	0	0	0	0	0	0	0	0
Incest	0	0	0	0	0	0	0	0	0
Robbery	0	0	0	0	0	0	0	0	0
Aggravated Assault	0	0	0	0	0	0	0	0	0
Burglary									
Forcible Burglary	0	0	0	0	0	0	0	0	0
Non-Forcible Burglary	0	0	0	0	0	0	0	0	0
Attempted Burglary	0	0	0	0	0	0	0	0	0
Motor Vehicle Theft	0	0	0	0	0	0	0	0	1
Arson	0	0	0	0	0	0	0	0	0

Arrests and Disciplinary Actions		On Campus			Non-Campus Property			Public Property		
		2019	2020	2021	2019	2020	2021	2019	2020	2021
Drug Law Violations	Disciplinary Referrals	0	0	0	0	0	0	0	0	0
	Arrests by Police	0	0	0	0	0	0	0	0	0
Liquor Law Violations	Disciplinary Referrals	0	0	0	0	0	0	0	0	0
	Arrests by Police	0	0	0	0	0	0	0	0	0
Weapons Law Violations	Disciplinary Referrals	0	0	0	0	0	0	0	0	0
	Arrests by Police	0	0	0	0	0	0	0	0	0

VAWA Crimes	On Campus			Non-Campus Property			Public Property		
	2019	2020	2021	2019	2020	2021	2019	2020	2021
Dating Violence	0	0	0	0	0	0	0	0	0
Domestic Violence	0	0	0	0	0	0	0	0	0
Stalking	1	0	0	0	0	0	0	0	0

There were no hate or bias-related crimes, as defined by federal law, and there were no crimes ruled UNFOUNDED by investigation of a sworn law enforcement entity occurring within the Harrisburg Campus reporting geography for 2019, 2020 or 2021.

Lancaster Campus

1641 Old Philadelphia Pike Lancaster, PA 17602

Public Safety and Security and Emergency Assistance: 717-780-2568

On Campus: This category includes Clery-reportable violations of the law occurring within the property boundaries of the Lancaster Campus.

Non-campus: This category includes any Clery reportable crimes occurring at buildings or property that HACC Lancaster Campus controls by rent, lease or other use agreement that is used in direct support of, or in relation to the College's educational purposes, is frequently used by students, and is not within the same reasonably contiguous geographic area of the campus. Examples of this category include off campus class sites, facilities used for multi-night student trips, among others. This category does not include site used by programmatic agreement, such as nursing clinical sites or internship sites. (Note: Non-campus locations do not have a public property-reporting requirement. Disclosures for leased space are for hours of use only. Not all locations are used every year during a reporting period.)

Public Property: This category includes any Clery-reportable violations of the law that occurred within the span of Old Philadelphia Pike and Millennium Drive immediately adjacent to and accessible from campus property.

Patrol Jurisdiction: This term refers to the area where HACC Public Safety and Security Officers may patrol, respond to incidents, provide services and function as security officers. For HACC Lancaster Campus, this includes the campus property considered on campus for the purposes of Clery Geography.

In addition, Lancaster officers are authorized to patrol and respond to incidents occurring on the portions of Campus Drive and Millennium Drive owned by East Lampeter Township and are considered public property for the purposes of Clery Act Geography. This excludes the public intersections at Campus Drive and Old Philadelphia Pike and well as the public intersection at Millennium Drive and Pitney Road. HACC Lancaster officers may traverse these areas, but may not respond to incidents in these intersections unless directed by a municipal or state law enforcement official. These intersections are also included in public property Clery geography.

Lancaster officers patrol the HACC-owned undeveloped parcel nominally located at 21 Pitney Road. This wooded lot abuts On Campus property. It is not currently used in relation to or in support of the educational purpose of the campus. Please see the Lancaster Campus Clery Act Geography map in the appendix at the end of this report.

(Pg. 68)

Lancaster Campus

Clery Act Reportable Crimes	On Campus			Non-Campus Property			Public Property		
	2019	2020	2021	2019	2020	2021	2019	2020	2021
Murder/Non-Negligent Manslaughter	0	0	0	0	0	0	0	0	0
Negligent Manslaughter	0	0	0	0	0	0	0	0	0
Sexual Offenses									
Rape	0	0	0	0	0	0	0	0	0
Fondling	0	0	0	0	0	0	0	0	0
Statutory Rape	0	0	0	0	0	0	0	0	0
Incest	0	0	0	0	0	0	0	0	0
Robbery	0	0	0	0	0	0	0	0	0
Aggravated Assault	0	0	0	0	0	0	0	0	0
Burglary									
Forcible Burglary	0	1	0	0	0	0	0	0	0
Non-Forcible Burglary	0	0	0	0	0	0	0	0	0
Attempted Burglary	0	0	0	0	0	0	0	0	0
Motor Vehicle Theft	0	0	0	0	0	0	0	0	0
Arson	0	0	0	0	0	0	0	0	0

Arrests and Disciplinary Actions		On Campus			Non-Campus Property			Public Property		
		2019	2020	2021	2019	2020	2021	2019	2020	2021
Drug Law Violations	Disciplinary Referrals	0	0	0	0	0	0	0	0	0
	Arrests by Police	0	0	0	0	0	0	0	0	0
Liquor Law Violations	Disciplinary Referrals	0	0	0	0	0	0	0	0	0
	Arrests by Police	0	0	0	0	0	0	0	0	0
Weapons Law Violations	Disciplinary Referrals	0	0	0	0	0	0	0	0	0
	Arrests by Police	0	0	0	0	0	0	0	0	0

VAWA Crimes	On Campus			Non-Campus Property			Public Property		
	2019	2020	2021	2019	2020	2021	2019	2020	2021
Dating Violence	0	0	0	0	0	0	0	0	0
Domestic Violence	0	0	0	0	0	0	0	0	0
Stalking	0	0	0	0	0	0	0	0	0

There were no hate or bias-related crimes, as defined by federal law, and there were no crimes ruled UNFOUNDED by investigation of a sworn law enforcement entity occurring within the Lancaster Campus reporting geography for 2019, 2020 or 2021.

Lebanon Campus

735 Cumberland St.

Lebanon, PA 17042

Public Safety and Security and Emergency Assistance: 717-780-2568

On Campus: This category includes any Clery-reportable violations of the law occurring within the property boundaries of the Lebanon Campus. Also included are parking spaces S2 – S6, and the double row of parking on the east side of the lot in the Lebanon City Municipal Lot, and that portion of parking spaces on the east side of the Fulton Bank parking lot, which are leased by the Campus for employee/student parking.

Non-campus: This category includes any Clery reportable crimes occurring at buildings or property that HACC Lebanon Campus controls by rent, lease or other use agreement that is used in direct support of, or in relation to the College’s educational purposes, is frequently used by students, and is not within the same reasonably contiguous geographic area of the campus. Examples of this category include off campus class sites, facilities used for multi-night student trips, among others. This category does not include site used by programmatic agreement, such as nursing clinical sites or internship sites. (Note: Non-campus locations do not have a public property-reporting requirement. Disclosures for leased space are for hours of use only. Not all locations are used every year during a reporting period.)

Public Property: This category includes any Clery-reportable violations of the law occurring within the span of Cumberland, Spring and North Liberty streets and their public walkways immediately adjacent to and accessible from the Lebanon Campus. The municipal parking lot across Spring Street from the rear of the campus is also included under Clery rules.

Patrol Jurisdiction: This term refers to the area where HACC Public Safety and Security officers may patrol, respond to incidents, provide services and function as security officers. For the Lebanon Campus, this includes the campus building and parking lot and the municipal sidewalk running in front of the campus property. HACC Lebanon Officers are also authorized to patrol, provide parking and safety services for students and respond to incidents in the Lebanon City municipal parking lot across Spring Street from the rear of the campus property as well as a portion of the Fulton Bank parking lot at North Fifth and Willow Streets. The lot at North Fifth and Willow streets is not included as Public Property as it falls outside of the “immediately adjacent to and accessible from” rule for the Clery Act.

Lebanon officers may traverse the spans of Spring, North Liberty and Cumberland Streets immediately adjacent to and accessible from the campus property, but are not authorized to respond to incidents unless directed by a municipal or state law enforcement official.

Please see the Lebanon Campus Clery Act Geography map in the appendix at the end of this report.
(Pg. 69)

Lebanon Campus

Clery Act Reportable Crimes	On Campus			Non-Campus Property			Public Property		
	2019	2020	2021	2019	2020	2021	2019	2020	2021
Murder/Non-Negligent Manslaughter	0	0	0	0	0	0	0	0	1
Negligent Manslaughter	0	0	0	0	0	0	0	0	0
Sexual Offenses									
Rape	0	0	0	0	0	0	0	0	0
Fondling	0	0	0	0	0	0	0	0	0
Statutory Rape	0	0	0	0	0	0	0	0	0
Incest	0	0	0	0	0	0	0	0	0
Robbery	0	0	0	0	0	0	0	0	0
Aggravated Assault	0	0	0	0	0	0	0	0	0
Burglary									
Forcible Burglary	0	0	0	0	0	0	0	0	0
Non-Forcible Burglary	0	0	0	0	0	0	0	0	0
Attempted Burglary	0	0	0	0	0	0	0	0	0
Motor Vehicle Theft	0	0	0	0	0	0	0	0	0
Arson	0	0	0	0	0	0	0	0	0

Arrests and Disciplinary Actions		On Campus			Non-Campus Property			Public Property		
		2019	2020	2021	2019	2020	2021	2019	2020	2021
Drug Law Violations	Disciplinary Referrals	0	0	0	0	0	0	0	0	0
	Arrests by Police	0	0	0	0	0	0	3	0	0
Liquor Law Violations	Disciplinary Referrals	0	0	0	0	0	0	0	0	0
	Arrests by Police	0	0	0	0	0	0	0	0	0
Weapons Law Violations	Disciplinary Referrals	0	0	0	0	0	0	0	0	0
	Arrests by Police	0	0	0	0	0	0	0	0	0

VAWA Crimes	On Campus			Non-Campus Property			Public Property		
	2019	2020	2021	2019	2020	2021	2019	2020	2021
Dating Violence	0	0	0	0	0	0	0	0	0
Domestic Violence	0	0	0	0	0	0	0	0	0
Stalking	0	0	0	0	0	0	0	0	0

There were no hate or bias-related crimes, as defined by federal law, and there were no crimes ruled UNFOUNDED by investigation of a sworn law enforcement entity occurring within the Lebanon Campus reporting geography for 2019, 2020 or 2021.

Midtown Trade and Technology Center

1500 N. Third St., Harrisburg, PA 17110

Public Safety and Security and Emergency Assistance: 717-780-2568

On Campus: This category includes any Clery-reportable crimes occurring within the property boundaries of the Midtown 1 facility at 1523 N. Fourth St. and the Midtown 2 facilities at Third and Riley streets, as well as the Urban Meadow area and the parking lots assigned to each facility.

Please note: HACC's lease for the physical property described as **Midtown 2**, including the parking lots, and public properties adjacent to, and bordering that location, ended on June 30, 2022. That campus location is therefore removed from HACC's Clery geography beginning on July 1, 2022.

Non-campus: This category includes any Clery reportable crimes occurring at buildings or property that HACC Midtown T&TC controls by rent, lease or other use agreement that is used in direct support of, or in relation to the College's educational purposes, is frequently used by students, and is not within the same reasonably contiguous geographic area of the campus. Examples of this category include off campus class sites, facilities used for multi-night student trips, among others. This category does not include site used by programmatic agreement, such as nursing clinical sites or internship sites. (Note: The Midtown Trade and Technology Center did not have any property in this category for this reporting period.)

Public Property: This category includes any Clery-reportable crimes occurring at the following locations:

- **Midtown 1 facility:** The public sidewalks and roadways including North Fourth, Boyd, Fulton, Harris, Riley and Logan streets bordering the facility and its parking areas.
- **Midtown 2 and Campus Square facilities:** The public sidewalks and roadways immediately adjacent to and accessible from either building or the parking areas. This includes North Third, Riley, Basin, Susquehanna and Harris streets.

Patrol Jurisdiction: This term refers to the area where HACC Public Safety and Security Officers may patrol, respond to incidents, provide services and function as security officers. For the Midtown Center, this includes all buildings and property listed as on campus as well as the public walkways immediately adjacent to and accessible from campus buildings and parking lots.

Midtown officers may traverse the municipal roadways listed as public property, but are not authorized to respond to incidents occurring on the roadways unless directed by a municipal or state law enforcement official.

Please see the Midtown Center Clery Act Geography map in the appendix at the end of this report.
(Pg. 67)

Midtown Center

Clery Act Reportable Crimes	On Campus			Non-Campus Property			Public Property		
	2019	2020	2021	2019	2020	2021	2019	2020	2021
Murder/Non-Negligent Manslaughter	0	0	0	0	0	0	0	0	0
Negligent Manslaughter	0	0	0	0	0	0	0	0	0
Sexual Offenses									
Rape	0	0	0	0	0	0	0	0	0
Fondling	0	0	0	0	0	0	0	0	0
Statutory Rape	0	0	0	0	0	0	0	0	0
Incest	0	0	0	0	0	0	0	0	0
Robbery	0	0	0	0	0	0	0	0	0
Aggravated Assault	0	0	0	0	0	0	0	0	0
Burglary									
Forcible Burglary	0	0	0	0	0	0	0	0	0
Non-Forcible Burglary	0	0	0	0	0	0	0	0	0
Attempted Burglary	0	0	0	0	0	0	0	0	0
Motor Vehicle Theft	1	0	0	0	0	0	0	0	0
Arson	0	0	0	0	0	0	0	0	0

Arrests and Disciplinary Actions		On Campus			Non-Campus Property			Public Property		
		2019	2020	2021	2019	2020	2021	2019	2020	2021
Drug Law Violations	Disciplinary Referrals	0	0	0	0	0	0	0	0	0
	Arrests by Police	0	0	0	0	0	0	0	0	0
Liquor Law Violations	Disciplinary Referrals	0	0	0	0	0	0	0	0	0
	Arrests by Police	0	0	0	0	0	0	0	0	0
Weapons Law Violations	Disciplinary Referrals	0	0	0	0	0	0	0	0	0
	Arrests by Police	0	0	0	0	0	0	0	0	0

VAWA Crimes	On Campus			Non-Campus Property			Public Property		
	2019	2020	2021	2019	2020	2021	2019	2020	2021
Dating Violence	0	0	0	0	0	0	0	0	0
Domestic Violence	0	0	0	0	0	0	0	0	0
Stalking	0	0	0	0	0	0	0	0	0

There were no hate or bias-related crimes, as defined by federal law, and there were no crimes ruled UNFOUNDED by investigation of a sworn law enforcement entity occurring within the Midtown Campus reporting geography for 2019, 2020 or 2021.

York Campus

2010 Pennsylvania Ave.

York, PA 17404

Public Safety and Security and Emergency Assistance: 717-780-2568

On Campus: This category includes any Clery-reportable crimes occurring within the property boundaries of the York Campus including the George M. Leader Building at 2010 Pennsylvania Ave., the College Support Services Building at 2104 Pennsylvania Ave., the Goodling Building at 2101 Pennsylvania Ave., the Cytec Building at 2161 Pennsylvania Ave. and the parking lots associated with these buildings. The parking lot at 2130 Pennsylvania Ave. is campus owned and is frequently used as student overflow parking. It is also included in this category.

Non-campus: This category includes any Clery reportable crimes occurring at buildings or property that HACC York Campus controls by rent, lease or other use agreement that is used in direct support of, or in relation to the College's educational purposes, is frequently used by students, and is not within the same reasonably contiguous geographic area of the campus. Examples of this category include off campus class sites, facilities used for multi-night student trips, among others. This category does not include site used by programmatic agreement, such as nursing clinical sites or internship sites. (Note: Non-campus locations do not have a public property-reporting requirement. Disclosures for leased space are for hours of use only. Not all locations are used every year during a reporting period.)

Public Property: This category includes any Clery-reportable crimes occurring within the span of Pennsylvania Avenue, Neu Road and Vogelsong Road and their public walkways immediately adjacent to and accessible from the York Campus. This also includes reported crimes at the YATA bus shelters immediately adjacent to and accessible from campus property on Pennsylvania Avenue, Neu Road and Vogelsong Road.

Patrol Jurisdiction: This term refers to the area where HACC Public Safety and Security officers may patrol, respond to incidents, provide services and function as security officers. For HACC York Campus, this includes the buildings and property listed as on campus, as well as the public walkways immediately adjacent to and accessible from the campus' buildings and the YATA bus shelters immediately accessible from the Leader Building on campus property.

York officers provide security services for the HACC owned property at 2130 Pennsylvania Ave. This building is tenant occupied and controlled. It is not accessible to students, employees or the public.

York officers may traverse the municipal streets surrounding and running through the campus, but are not authorized to respond to incidents occurring on the roadways unless directed by a municipal or state law enforcement official.

Please see the York Campus Clery Act Geography map in the appendix at the end of this report.

(Pg.70)

York Campus

Clery Act Reportable Crimes	On Campus			Non-Campus Property			Public Property		
	2019	2020	2021	2019	2020	2021	2019	2020	2021
Murder/Non-Negligent Manslaughter	0	0	0	0	0	0	0	0	0
Negligent Manslaughter	0	0	0	0	0	0	0	0	0
Sexual Offenses									
Rape	0	0	0	0	0	0	0	0	0
Fondling	3	0	0	0	0	0	0	0	0
Statutory Rape	0	0	0	0	0	0	0	0	0
Incest	0	0	0	0	0	0	0	0	0
Robbery	0	0	0	0	0	0	0	0	0
Aggravated Assault	0	0	0	0	0	0	0	0	0
Burglary									
Forcible Burglary	0	0	0	0	0	0	0	0	0
Non-Forcible Burglary	0	0	0	0	0	0	0	0	0
Attempted Burglary	0	0	0	0	0	0	0	0	0
Motor Vehicle Theft	0	0	0	0	0	0	0	0	0
Arson	0	0	0	0	0	0	0	0	0

Arrests and Disciplinary Actions		On Campus			Non-Campus Property			Public Property		
		2019	2020	2021	2019	2020	2021	2019	2020	2021
Drug Law Violations	Disciplinary Referrals	0	0	0	0	0	0	0	0	0
	Arrests by Police	0	0	0	0	0	0	0	0	0
Liquor Law Violations	Disciplinary Referrals	1	0	0	0	0	0	0	0	0
	Arrests by Police	0	0	0	0	0	0	0	0	0
Weapons Law Violations	Disciplinary Referrals	0	0	0	0	0	0	0	0	0
	Arrests by Police	0	0	0	0	0	0	0	0	0

VAWA Crimes	On Campus			Non-Campus Property			Public Property		
	2019	2020	2021	2019	2020	2021	2019	2020	2021
Dating Violence	0	0	0	0	0	0	0	0	0
Domestic Violence	0	0	0	0	0	0	0	0	0
Stalking	0	0	0	0	0	0	0	0	0

There were no hate or bias-related crimes, as defined by federal law, and there were no crimes ruled UNFOUNDED by investigation of a sworn law enforcement entity occurring within the York Campus reporting geography for 2019, 2020 or 2021.

Pennsylvania Uniform Crime Reporting Statistics

As codified in the Uniform Crime Reporting Act (PA Act 180, PA 18 C.S. Chapter 3), the Commonwealth of Pennsylvania requires that violations of the law known to the HACC Public Safety and Security Department which have occurred within its jurisdictional boundaries be reported to the Pennsylvania State Police's Uniform Crime Reporting (UCR) system on an annual basis and that the Annual Security Report disclose the last three years of UCR statistics and crime rates.

The jurisdictional boundaries are the areas on and around HACC's campuses where Public Safety and Security officers are authorized to patrol and respond to incidents or service requests.

Officers may traverse the municipal streets surrounding and running through a campus, but are not authorized to respond to incidents occurring on the roadways unless directed by a municipal or state law enforcement official.

Crime rates are calculated as required by Commonwealth law on a campus-by-campus basis for each crime category and are expressed based on a theoretical population of 100,000 full-time equivalent (FTE) students and employees.

This section also utilizes the FBI UCR crime definitions and the UCR hierarchy rule in multi-crime incidents. For sex offenses, UCR definitions are used for PA reporting purposes.

This section is presented by campus in the format required by the Pennsylvania State Police UCR Program and includes crimes not reportable under the Clery Act.

Note: The FBI UCR program revised the definition of rape beginning January 2013 to the following:
“Penetration, no matter how slight, of the vagina or anus with any body part or object, or oral penetration by a sex organ of another person, without the consent of the victim.”

Gettysburg Campus

Offense Classification	2019		2020		2021	
Part I Offenses	Known Offenses	Crime Rate Per 100,000	Known Offenses	Crime Rate Per 100,000	Known Offenses	Crime Rate Per 100,000
Murder and Non-Negligent Manslaughter	0	0	0	0	0	0
Negligent Manslaughter	0	0	0	0	0	0
Rape						
Rape	0	0	0	0	0	0
Assault to Rape	0	0	0	0	0	0
Robbery						
Use of Firearm	0	0	0	0	0	0
Use of Knife/Cutting Instrument	0	0	0	0	0	0
Use of Other Dangerous Weapon	0	0	0	0	0	0
Strong Arm (Hands, feet, etc.)	0	0	0	0	0	0
Assault						
Aggravated with Firearm	0	0	0	0	0	0
Aggravated with Knife/Cutting Instr.	0	0	0	0	0	0
Aggravated with Other Dangerous Weapon	0	0	0	0	0	0
Aggravated Strong Arm	0	0	0	0	0	0
Other Assaults (Simple and Intimidation)	1	48.69	0	0	0	0
Burglary						
Entry by Force	0	0	0	0	0	0
Entry without Force	0	0	0	0	0	0
Attempted Forcible Entry	0	0	0	0	0	0
Larceny / Theft	0	0	0	0	0	0
Motor Vehicle Theft						
Automobiles	0	0	0	0	0	0
Trucks & Busses	0	0	0	0	0	0
Other Vehicles	0	0	0	0	0	0
Arson	0	0	0	0	0	0
Total Part I Offenses	1	48.69	0	0	0	0

Offense Classification	2019		2020		2021	
Part II Offenses	Known Offenses	Crime Rate Per 100,000	Known Offenses	Crime Rate Per 100,000	Known Offenses	Crime Rate Per 100,000
Forgery & Counterfeiting	0	0	0	0	0	0
Fraud	0	0	0	0	0	0
Embezzlement	0	0	0	0	0	0
Stolen Property (Receiving/Buying)	0	0	0	0	0	0
Vandalism	0	0	0	0	0	0
Weapons Law Violations	0	0	0	0	0	0
Prostitution and Commercialized Vice	0	0	0	0	0	0

Offense Classification	2019		2020		2021	
Sex Offenses (Excl. Rape & Prostitution)	0	0	0	0	0	0
Drug Abuse Violations						
Sale: Opium/Cocaine	0	0	0	0	0	0
Sale: Marijuana	0	0	0	0	0	0
Sale: Synthetic	0	0	0	0	0	0
Sale: Other	0	0	0	0	0	0
Possession: Opium/Cocaine	0	0	0	0	0	0
Possession: Marijuana	0	0	0	0	0	0
Possession: Synthetic	0	0	0	0	0	0
Possession: Other	0	0	0	0	0	0
Gambling	0	0	0	0	0	0
Offenses Against Family and Children	0	0	0	0	0	0
Driving Under the Influence	0	0	0	0	0	0
Liquor Law Violations	0	0	0	0	0	0
Drunkenness	0	0	0	0	0	0
Disorderly Conduct	0	0	0	0	0	0
Vagrancy	0	0	0	0	0	0
All Other Offenses (Excl. Traffic)	0	0	0	0	0	0
Total Part II Offenses	0	0	0	0	0	0
Total All Offenses	1	48.69	0	0	0	0
Full-Time Equivalents Used	1918 Students 136 Employees		1943 Students 124 Employees		2862 Students 88 Employees	

Crime rate = number of crime occurrences / (Actual FTE population / 100,000)

Harrisburg Campus

Offense Classification	2019		2020		2021	
Part I Offenses	Known Offenses	Crime Rate Per 100,000	Known Offenses	Crime Rate Per 100,000	Known Offenses	Crime Rate Per 100,000
Murder and Non-Negligent Manslaughter	0	0	0	0	0	0
Negligent Manslaughter	0	0	0	0	0	0
Rape						
Rape	0	0	0	0	0	0
Assault to Rape	0	0	0	0	0	0
Robbery						
Use of Firearm	0	0	0	0	0	0
Use of Knife/Cutting Instrument	0	0	0	0	0	0
Use of Other Dangerous Weapon	0	0	0	0	0	0
Strong Arm (Hands, feet, etc.)	0	0	0	0	0	0
Assault						
Aggravated with Firearm	0	0	0	0	0	0
Aggravated with Knife/Cutting Instr.	0	0	0	0	0	0
Aggravated with Other Dangerous Weapon	0	0	0	0	0	0
Aggravated Strong Arm	0	0	0	0	0	0
Other Assaults (Simple and Intimidation)	0	0	0	0	1	8.82
Burglary						
Entry by Force	0	0	0	0	0	0
Entry without Force	0	0	0	0	0	0
Attempted Forcible Entry	0	0	0	0	0	0
Larceny / Theft	5	50.29	1	10.22	0	0
Motor Vehicle Theft						
Automobiles	0	0	0	0	1	8.82
Trucks & Busses	0	0	0	0	0	0
Other Vehicles	0	0	0	0	0	0
Arson	0	0	0	0	0	0
Total Part I Offenses	5	50.29	1	10.22	2	17.64

Offense Classification	2019		2020		2021	
Part II Offenses	Known Offenses	Crime Rate Per 100,000	Known Offenses	Crime Rate Per 100,000	Known Offenses	Crime Rate Per 100,000
Forgery & Counterfeiting	0	0	0	0	0	0
Fraud	0	0	0	0	0	0
Embezzlement	0	0	0	0	0	0
Stolen Property (Receiving/Buying)	0	0	0	0	0	0
Vandalism	1	10.05	0	0	1	8.82
Weapons Law Violations	0	0	0	0	0	0
Prostitution and Commercialized Vice	0	0	0	0	0	0

Offense Classification	2019		2020		2021	
Sex Offenses (Excl. Rape & Prostitution)	1	10.05	0	0	0	0
Drug Abuse Violations						
Sale: Opium/Cocaine	0	0	0	0	0	0
Sale: Marijuana	0	0	0	0	0	0
Sale: Synthetic	0	0	0	0	0	0
Sale: Other	0	0	0	0	0	0
Possession: Opium/Cocaine	0	0	0	0	0	0
Possession: Marijuana	0	0	0	0	0	0
Possession: Synthetic	0	0	0	0	0	0
Possession: Other	0	0	0	0	0	0
Gambling	0	0	0	0	0	0
Offenses Against Family and Children	0	0	0	0	0	0
Driving Under the Influence	0	0	0	0	0	0
Liquor Law Violations	0	0	0	0	0	0
Drunkenness	0	0	0	0	0	0
Disorderly Conduct	1	10.05	0	0	0	0
Vagrancy	0	0	0	0	0	0
All Other Offenses (Excl. Traffic)	4	40.23	1	10.22	0	0
Total Part II Offenses	7	70.38	1	10.22	1	8.82
Total All Offenses	12	120.67	2	20.44	3	26.46
Full-Time Equivalents Used	9225 Students 717 Employees		8967 Students 814 Employees		10328 Students 1007 Employees	

Crime rate = number of crime occurrences / (Actual FTE population / 100,000)

Lancaster Campus

Offense Classification	2019		2020		2021	
Part I Offenses	Known Offenses	Crime Rate Per 100,000	Known Offenses	Crime Rate Per 100,000	Known Offenses	Crime Rate Per 100,000
Murder and Non-Negligent Manslaughter	0	0	0	0	0	0
Negligent Manslaughter	0	0	0	0	0	0
Rape						
Rape	0	0	0	0	0	0
Assault to Rape	0	0	0	0	0	0
Robbery						
Use of Firearm	0	0	0	0	0	0
Use of Knife/Cutting Instrument	0	0	0	0	0	0
Use of Other Dangerous Weapon	0	0	0	0	0	0
Strong Arm (Hands, feet, etc.)	0	0	0	0	0	0
Assault						
Aggravated with Firearm	0	0	0	0	0	0
Aggravated with Knife/Cutting Instr.	0	0	0	0	0	0
Aggravated with Other Dangerous Weapon	0	0	0	0	0	0
Aggravated Strong Arm	0	0	0	0	0	0
Other Assaults (Simple and Intimidation)	0	0	0	0	0	0
Burglary						
Entry by Force	0	0	1	19.21	0	0
Entry without Force	0	0	0	0	0	0
Attempted Forcible Entry	0	0	0	0	0	0
Larceny / Theft	4	75.46	0	0	0	0
Motor Vehicle Theft						
Automobiles	0	0	0	0	0	0
Trucks & Busses	0	0	0	0	0	0
Other Vehicles	0	0	0	0	0	0
Arson	0	0	0	0	0	0
Total Part I Offenses	4	75.46	1	19.21	0	0

Offense Classification	2019		2020		2021	
Part II Offenses	Known Offenses	Crime Rate Per 100,000	Known Offenses	Crime Rate Per 100,000	Known Offenses	Crime Rate Per 100,000
Forgery & Counterfeiting	0	0	0	0	0	0
Fraud	0	0	0	0	0	0
Embezzlement	0	0	0	0	0	0
Stolen Property (Receiving/Buying)	0	0	0	0	0	0
Vandalism	0	0	0	0	0	0
Weapons Law Violations	0	0	0	0	0	0
Prostitution and Commercialized Vice	0	0	0	0	0	0

Offense Classification	2019		2020		2021	
Sex Offenses (Excl. Rape & Prostitution)	0	0	0	0	0	0
Drug Abuse Violations						
Sale: Opium/Cocaine	0	0	0	0	0	0
Sale: Marijuana	0	0	0	0	0	0
Sale: Synthetic	0	0	0	0	0	0
Sale: Other	0	0	0	0	0	0
Possession: Opium/Cocaine	0	0	0	0	0	0
Possession: Marijuana	0	0	0	0	0	0
Possession: Synthetic	0	0	0	0	0	0
Possession: Other	0	0	0	0	0	0
Gambling	0	0	0	0	0	0
Offenses Against Family and Children	0	0	0	0	0	0
Driving Under the Influence	0	0	0	0	0	0
Liquor Law Violations	0	0	0	0	0	0
Drunkenness	0	0	0	0	0	0
Disorderly Conduct	1	18.86	0	0	0	0
Vagrancy	0	0	0	0	0	0
All Other Offenses (Excl. Traffic)	0	0	0	0	0	0
Total Part II Offenses	1	18.86	0	0	0	0
Total All Offenses	5	94.32	1	19.21	0	0
Full-Time Equivalents Used	4968 Students 333 Employees		4888 Students 317 Employees		6020 Students 231 Employees	

Crime rate = number of crime occurrences / (Actual FTE population / 100,000)

Lebanon Campus

Offense Classification	2019		2020		2021	
Part I Offenses	Known Offenses	Crime Rate Per 100,000	Known Offenses	Crime Rate Per 100,000	Known Offenses	Crime Rate Per 100,000
Murder and Non-Negligent Manslaughter	0	0	0	0	1	71.43
Negligent Manslaughter	0	0	0	0	0	0
Rape						
Rape	0	0	0	0	0	0
Assault to Rape	0	0	0	0	0	0
Robbery						
Use of Firearm	0	0	0	0	0	0
Use of Knife/Cutting Instrument	0	0	0	0	0	0
Use of Other Dangerous Weapon	0	0	0	0	0	0
Strong Arm (Hands, feet, etc.)	0	0	0	0	0	0
Assault						
Aggravated with Firearm	0	0	0	0	0	0
Aggravated with Knife/Cutting Instr.	0	0	0	0	0	0
Aggravated with Other Dangerous Weapon	0	0	0	0	0	0
Aggravated Strong Arm	0	0	0	0	0	0
Other Assaults (Simple and Intimidation)	0	0	0	0	0	0
Burglary						
Entry by Force	0	0	0	0	0	0
Entry without Force	0	0	0	0	0	0
Attempted Forcible Entry	0	0	0	0	0	0
Larceny / Theft	2	203.67	1	112.74	1	71.43
Motor Vehicle Theft						
Automobiles	0	0	0	0	0	0
Trucks & Busses	0	0	0	0	0	0
Other Vehicles	0	0	0	0	0	0
Arson	0	0	0	0	0	0
Total Part I Offenses	2	203.67	1	112.74	2	142.86

Offense Classification	2019		2020		2021	
Part II Offenses	Known Offenses	Crime Rate Per 100,000	Known Offenses	Crime Rate Per 100,000	Known Offenses	Crime Rate Per 100,000
Forgery & Counterfeiting	0	0	0	0	0	0
Fraud	0	0	0	0	0	0
Embezzlement	0	0	0	0	0	0
Stolen Property (Receiving/Buying)	0	0	0	0	0	0
Vandalism	0	0	0	0	0	0
Weapons Law Violations	0	0	0	0	0	0
Prostitution and Commercialized Vice	0	0	0	0	0	0

Offense Classification	2019		2020		2021	
Sex Offenses (Excl. Rape & Prostitution)	0	0	0	0	0	0
Drug Abuse Violations						
Sale: Opium/Cocaine	0	0	0	0	0	0
Sale: Marijuana	0	0	0	0	0	0
Sale: Synthetic	0	0	0	0	0	0
Sale: Other	0	0	0	0	0	0
Possession: Opium/Cocaine	0	0	0	0	0	0
Possession: Marijuana	0	0	0	0	0	0
Possession: Synthetic	0	0	0	0	0	0
Possession: Other	0	0	0	0	0	0
Gambling	0	0	0	0	0	0
Offenses Against Family and Children	0	0	0	0	0	0
Driving Under the Influence	0	0	0	0	0	0
Liquor Law Violations	0	0	0	0	0	0
Drunkenness	0	0	0	0	0	0
Disorderly Conduct	0	0	0	0	0	0
Vagrancy	0	0	0	0	0	0
All Other Offenses (Excl. Traffic)	0	0	0	0	0	0
Total Part II Offenses	2	203.67	0	0	0	0
Total All Offenses	2	203.67	1	112.74	2	142.86
Full-Time Equivalents Used	918 Students 64 Employees		845 Students 42 Employees		1369 Students 31 Employees	

Crime rate = number of crime occurrences / (Actual FTE population / 100,000)

Midtown Trade and Technology Center (Midtown I & Midtown II)

Offense Classification	2019		2020		2021	
Part I Offenses	Known Offenses	Crime Rate Per 100,000	Known Offenses	Crime Rate Per 100,000	Known Offenses	Crime Rate Per 100,000
Murder and Non-Negligent Manslaughter	0	0	0	0	0	0
Negligent Manslaughter	0	0	0	0	0	0
Rape						
Rape	0	0	0	0	0	0
Assault to Rape	0	0	0	0	0	0
Robbery						
Use of Firearm	0	0	0	0	0	0
Use of Knife/Cutting Instrument	0	0	0	0	0	0
Use of Other Dangerous Weapon	0	0	0	0	0	0
Strong Arm (Hands, feet, etc.)	0	0	0	0	0	0
Assault						
Aggravated with Firearm	0	0	0	0	0	0
Aggravated with Knife/Cutting Instr.	0	0	0	0	0	0
Aggravated with Other Dangerous Weapon	0	0	0	0	0	0
Aggravated Strong Arm	0	0	0	0	0	0
Other Assaults (Simple and Intimidation)	1	72.78	0	0	1	800
Burglary						
Entry by Force	0	0	0	0	0	0
Entry without Force	0	0	0	0	0	0
Attempted Forcible Entry	0	0	0	0	0	0
Larceny / Theft	2	286	0	0	1	800
Motor Vehicle Theft						
Automobiles	1	142.9	0	0	0	0
Trucks & Busses	0	0	0	0	0	0
Other Vehicles	0	0	0	0	0	0
Arson	0	0	0	0	0	0
Total Part I Offenses	4	501.68	0	0	2	1600

Offense Classification	2019		2020		2021	
Part II Offenses	Known Offenses	Crime Rate Per 100,000	Known Offenses	Crime Rate Per 100,000	Known Offenses	Crime Rate Per 100,000
Forgery & Counterfeiting	0	0	0	0	0	0
Fraud	0	0	0	0	0	0
Embezzlement	0	0	0	0	0	0
Stolen Property (Receiving/Buying)	0	0	0	0	0	0
Vandalism	1	72.78	0	0	1	800
Weapons Law Violations	0	0	0	0	0	0
Prostitution and Commercialized Vice	0	0	0	0	0	0

Offense Classification	2019		2020		2021	
Sex Offenses (Excl. Rape & Prostitution)	0	0	0	0	0	0
Drug Abuse Violations						
Sale: Opium/Cocaine	0	0	0	0	0	0
Sale: Marijuana	0	0	0	0	0	0
Sale: Synthetic	0	0	0	0	0	0
Sale: Other	0	0	0	0	0	0
Possession: Opium/Cocaine	0	0	0	0	0	0
Possession: Marijuana	0	0	0	0	0	0
Possession: Synthetic	0	0	0	0	0	0
Possession: Other	0	0	0	0	0	0
Gambling	0	0	0	0	0	0
Offenses Against Family and Children	0	0	0	0	0	0
Driving Under the Influence	0	0	0	0	0	0
Liquor Law Violations	0	0	0	0	0	0
Drunkenness	0	0	0	0	0	0
Disorderly Conduct	2	145.56	0	0	0	0
Vagrancy	0	0	0	0	0	0
All Other Offenses (Excl. Traffic)	0	0	0	0	1	800
Total Part II Offenses	3	218.34	0	0	2	1600
Total All Offenses	7	720.02	0	0	4	3200
Full-Time Equivalents Used	1183 Students 191 Employees		637 Students 50 Employees		83 Students 42 Employees	

Crime rate = number of crime occurrences / (Actual FTE population / 100,000)

York Campus

Offense Classification	2019		2020		2021	
Part I Offenses	Known Offenses	Crime Rate Per 100,000	Known Offenses	Crime Rate Per 100,000	Known Offenses	Crime Rate Per 100,000
Murder and Non-Negligent Manslaughter	0	0	0	0	0	0
Negligent Manslaughter	0	0	0	0	0	0
Rape						
Rape	0	0	0	0	0	0
Assault to Rape	0	0	0	0	0	0
Robbery						
Use of Firearm	0	0	0	0	0	0
Use of Knife/Cutting Instrument	0	0	0	0	0	0
Use of Other Dangerous Weapon	0	0	0	0	0	0
Strong Arm (Hands, feet, etc.)	0	0	0	0	0	0
Assault						
Aggravated with Firearm	0	0	0	0	0	0
Aggravated with Knife/Cutting Instr.	0	0	0	0	0	0
Aggravated with Other Dangerous Weapon	0	0	0	0	0	0
Aggravated Strong Arm	0	0	0	0	0	0
Other Assaults (Simple and Intimidation)	0	0	0	0	0	0
Burglary						
Entry by Force	0	0	0	0	0	0
Entry without Force	0	0	0	0	0	0
Attempted Forcible Entry	0	0	0	0	0	0
Larceny / Theft	3	76.57	1	25.09	0	0
Motor Vehicle Theft						
Automobiles	0	0	0	0	0	0
Trucks & Busses	0	0	0	0	0	0
Other Vehicles	0	0	0	0	0	0
Arson	0	0	0	0	0	0
Total Part I Offenses	3	76.57	1	25.09	0	0

Offense Classification	2019		2020		2021	
Part II Offenses	Known Offenses	Crime Rate Per 100,000	Known Offenses	Crime Rate Per 100,000	Known Offenses	Crime Rate Per 100,000
Forgery & Counterfeiting	0	0	0	0	0	0
Fraud	0	0	0	0	0	0
Embezzlement	0	0	0	0	0	0
Stolen Property (Receiving/Buying)	0	0	0	0	0	0
Vandalism	0	0	0	0	0	0
Weapons Law Violations	0	0	0	0	0	0
Prostitution and Commercialized Vice	0	0	0	0	0	0

Offense Classification	2019		2020		2021	
Sex Offenses (Excl. Rape & Prostitution)	0	0	0	0	0	0
Drug Abuse Violations						
Sale: Opium/Cocaine	0	0	0	0	0	0
Sale: Marijuana	0	0	0	0	0	0
Sale: Synthetic	0	0	0	0	0	0
Sale: Other	0	0	0	0	0	0
Possession: Opium/Cocaine	0	0	0	0	0	0
Possession: Marijuana	0	0	0	0	0	0
Possession: Synthetic	0	0	0	0	0	0
Possession: Other	0	0	0	0	0	0
Gambling	0	0	0	0	0	0
Offenses Against Family and Children	0	0	0	0	0	0
Driving Under the Influence	0	0	0	0	0	0
Liquor Law Violations	0	0	0	0	0	0
Drunkenness	1	25.52	0	0	0	0
Disorderly Conduct	2	51.04	0	0	0	0
Vagrancy	0	0	0	0	0	0
All Other Offenses (Excl. Traffic)	1	25.52	0	0	0	0
Total Part II Offenses	4	102.08	0	0	0	0
Total All Offenses	7	178.65	1	25.09	0	0
Full-Time Equivalents Used	3701 Students 217 Employees		3797 Students 189 Employees		4525 Students 142 Employees	

Crime rate = number of crime occurrences / (Actual FTE population / 100,000)

Appendix

Clery Act Crime Definitions

Murder / Non-negligent Manslaughter – The willful (non-negligent) killing of one human being by another.

Negligent Manslaughter- The killing of one human being by another through gross negligence.

Rape – The penetration, no matter how slight, of the vagina or anus with any body part or object, or oral penetration by a sex organ of another person, without the consent of the victim.

Fondling – The touching of the private body parts of another person for the purpose of sexual gratification, without the consent of the victim, including instances where the victim is incapable of giving consent because of his/her age or because of his/her temporary or permanent mental incapacity.

Incest – Sexual intercourse between persons who are related to each other within the degrees wherein marriage is prohibited by law.

Statutory Rape – Sexual Intercourse with a person who is under the statutory age of consent. The statutory age of consent is defined by Pennsylvania Law.

Robbery – The taking or attempting to take anything of value from the care, custody, or control of a person or persons by force or threat of force or violence and/or by putting the victim in fear. Robbery may occur with or without the use of a weapon.

Aggravated Assault – An unlawful attack by one person upon another for the purpose of inflicting severe or aggravated bodily injury. This type of assault is usually accompanied by the use of a weapon or means likely to produce death or great bodily harm. Includes assaults where a weapon is displayed.

Burglary – The unlawful entry of a structure to commit a felony or theft. Includes entry by force, entry without force, and attempted forcible entry.

Motor Vehicle Theft – The theft or attempted theft of a motor vehicle. Includes automobiles, trucks, busses, and other motorized vehicles.

Arson – Willful or malicious burning or attempting to burn with or without intent to defraud a dwelling house, public building, motor vehicle or aircraft, personal property of another, etc.

Arrest and referrals for disciplinary action – Incidents in which a local or state drug, liquor, or weapons law is violated and the offender is either arrested by a police officer or referred to a student judicial authority for institutional disciplinary action. Does not include incidents where referrals are based on institutional policy alone without an alleged law violation.

Weapons Law Violations – The violation of laws or ordinances prohibiting the manufacture, sale, purchase, transportation, possession, concealment, or use of firearms, cutting instruments, explosives, incendiary devices, or other deadly weapons.

Drug Law Violations - The violation of laws prohibiting the production, distribution, and/or use of certain controlled substances and the equipment or devices utilized in their preparation and/or use. The unlawful cultivation, manufacture, distribution, sale, purchase, use possession, transportation or importation of any controlled drug or narcotic substance.

Liquor Law Violations – The violation of state or local laws or ordinances prohibiting the manufacture, sale, purchase, transportation, possession, or use of alcoholic beverages, not including driving under the influence or drunkenness.

Hate Crimes - Certain crimes are only Clery reportable when committed as a hate crime. A hate crime occurs when a crime is committed against a person or property and is motivated, whole or in part, by the offender's bias against the victim's actual or perceived race, gender, gender identity, religion, disability, sexual orientation, ethnicity, or national origin. Clery hate crimes may be any of the previously listed Clery Act crimes (excluding VAWA-defined crimes) or any of the following crimes which are not otherwise reported in the Clery Act statistics: Larceny/theft, simple assault, intimidation, and vandalism/property destruction.

Dating Violence – Violence committed by a person who is or has been in a social relationship of a romantic or intimate nature with the victim. The existence of such a relationship shall be determined based on the reporting party's statement and with consideration of the length of the relationship, the type of relationship, and the frequency of interaction between persons between the persons involved in the relationship. For the purposes of this definition, dating violence includes, but is not limited to, sexual or physical abuse or the threat of such abuse.

Domestic Violence - Felony or misdemeanor crime of violence committed by a current or former spouse or intimate partner of the victim; by a person with whom the victim shares a child in common; by a person who is cohabitating with, or has cohabitated with, the victim as a spouse or intimate partner; by a person similarly situated to a spouse or intimate partner under the domestic or family violence laws of the jurisdiction in which the crime of violence occurred; by any other person against an adult or youth victim who is protected from that person's acts under the domestic or family violence laws of the jurisdiction in which the crime of violence occurred.

Stalking - Engaging in a course of conduct that would cause a reasonable person to fear for the person's safety or the safety of others; or suffer substantial emotional distress. For the purposes of this definition, a course of conduct is two or more acts, including, but not limited to, acts in which the stalker directly, indirectly, or through third parties, by any action, method, device, or means, follows, monitors, observes, surveils, threatens, or communicates to or about a person, or interferes with a person's property. A reasonable person is a reasonable person under similar circumstances and with identities as the victim. Substantial emotional distress means significant mental suffering or anguish that may, but does not necessarily, require medical or other professional treatment or counseling.

Unfounded Crime – An alleged criminal offense report that is ruled false or baseless by the investigation of a duly sworn or commissioned law enforcement official; criminal offenses determined through investigation to have never occurred or were never attempted.


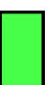


Gettysburg Campus Clery Act Geography



Harrisburg Campus
Clery Act Geography



Map Key

	On Campus		Public Property		Private Tenant / Property Excluded		Patrol Boundaries / UCR Juris
---	-----------	---	-----------------	---	------------------------------------	---	-------------------------------



HACC Middtown Center
Clery Act Geography

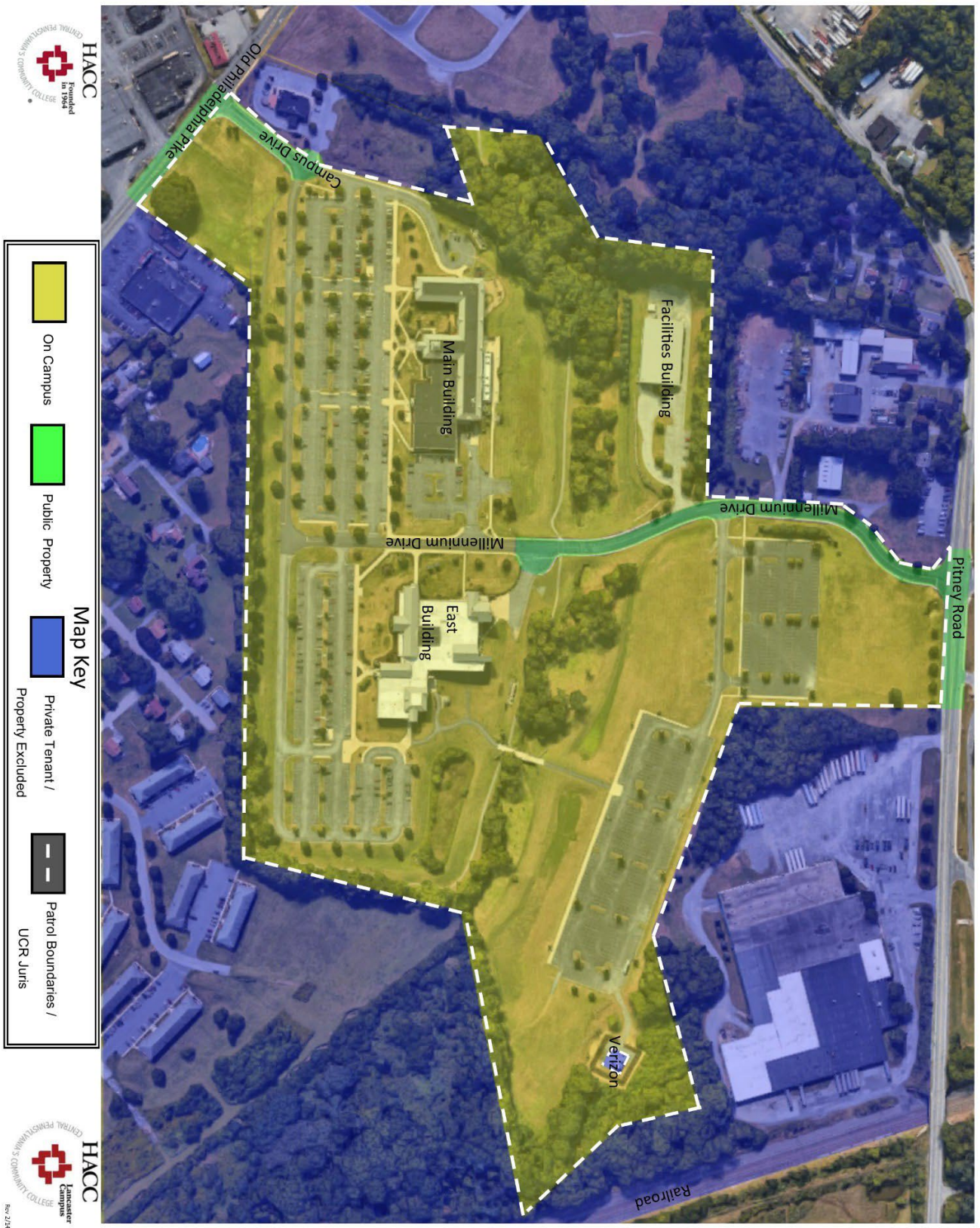


Map Key

- On Campus
- Public Property
- Private Tenant / Property Excluded
- Patrol Boundaries / UCR Juris



Lancaster Campus Clery Act Geography



Rev. 2/24/2018 MKR/CO

Lebanon Campus Clergy Act Geography



Map Key

- On Campus
- Public Property
- Private Tenant / Property Excluded
- Patrol Boundaries / UCR Juris





Map Key

- On Campus
- Public Property
- Private Tenant / Property Excluded
- Patrol Boundaries / UCR Juris



HACC recognizes its responsibility to promote the principles of inclusion and equal opportunity in employment and education. Therefore, it is the policy of HACC, in full accordance with the law, not to discriminate in recruitment, employment, student admissions, and student services on the basis of race, color, religion, age, political affiliation or belief, gender, national origin, ancestry, disability (physical or intellectual based challenges), place of birth, General Education Development Certification (GED), marital status, sexual orientation, gender identity or expression, veteran status, genetic history/information, or any other legally protected classification. Inquiries should be directed to the Office of the President, One HACC Drive, Harrisburg, PA 17110, Telephone 717-746-4101.